



**Water Monitoring Result at C7 - Windsor House
Mid-Flood Tide**

Date	Time	Weather Condition	Sampling Depth		Water Temperature			pH			Salinity			DO Saturation		DO		Turbidity		Suspended Solids				
			m		°C		-		ppt		%		mg/L		NTU		mg/L							
					Value	Average	Value	Average	Value	Average	Value	Average	Value	Average	Value	Average	Value	Average						
28/2/2015	11:25	Cloudy	Middle	-	18.30	18.30	18.35	8.15	8.15	8.15	31.91	31.91	31.91	80.6	80.6	80.3	6.25	6.26	6.23	3.25	3.25	3.25	3	3.50
	11:27		Middle	-	18.40	18.40		8.15	8.15		31.91	31.91		80.5	79.5		6.24	6.17		3.26	3.25		4	
2/3/2015	16:05	Cloudy	Middle	-	18.60	18.60	18.60	8.20	8.20	8.20	32.13	32.13	32.13	82.9	82.8	82.6	6.40	6.40	6.38	5.62	5.58	5.59	4	4.50
	16:07		Middle	-	18.60	18.60		8.20	8.20		32.13	32.13		82.6	82.2		6.38	6.35		5.55	5.59		5	
5/3/2015	18:48	Cloudy	Middle	-	18.10	18.10	18.10	8.31	8.31	8.29	32.24	32.24	32.25	80.5	78.5	78.5	6.27	6.12	6.12	3.54	3.60	3.60	2	2.50
	18:50		Middle	-	18.10	18.10		8.26	8.26		32.25	32.25		77.6	77.2		6.05	6.02		3.62	3.64		3	
7/3/2015	18:48	Cloudy	Middle	-	18.40	18.40	18.40	7.91	7.91	7.91	32.48	32.48	32.56	84.0	84.2	83.6	6.53	6.53	6.49	2.94	3.01	2.79	3	3.00
	18:49		Middle	-	18.40	18.40		7.90	7.90		32.64	32.64		83.1	83.2		6.45	6.46		2.62	2.58		3	
9/3/2015	7:45	Fine	Middle	-	18.60	18.60	18.60	8.22	8.22	8.22	32.48	32.48	32.48	76.5	77.5	77.7	5.89	5.98	5.99	4.82	4.82	4.82	2	6.00
	7:47		Middle	-	18.60	18.60		8.22	8.22		32.48	32.48		77.9	78.8		6.00	6.07		4.81	4.83		10	
11/3/2015	10:05	Cloudy	Middle	-	18.40	18.40	18.35	8.14	8.14	8.14	32.43	32.43	32.39	81.2	81.1	80.9	6.31	6.29	6.28	6.56	6.60	6.66	6	5.00
	10:07		Middle	-	18.30	18.30		8.14	8.14		32.35	32.35		80.7	80.7		6.27	6.26		6.65	6.81		4	
13/3/2015	7:45	Cloudy	Middle	-	17.90	17.90	17.90	8.16	8.16	8.18	32.32	32.32	32.33	82.9	82.9	82.1	6.43	6.43	6.39	4.17	4.18	4.17	4	3.50
	7:47		Middle	-	17.90	17.90		8.19	8.19		32.34	32.34		81.5	80.9		6.37	6.32		4.18	4.16		3	
16/3/2015	14:45	Cloudy	Middle	-	20.40	20.40	20.40	8.08	8.08	8.08	32.11	32.11	32.13	75.2	74.4	73.9	5.63	5.56	5.53	6.38	6.40	6.51	4	4.50
	14:47		Middle	-	20.40	20.40		8.07	8.07		32.15	32.15		73.7	72.3		5.51	5.41		6.82	6.45		5	
18/3/2015	16:40	Cloudy	Middle	-	20.80	20.80	20.85	8.03	8.03	8.03	32.02	32.02	32.03	79.5	77.9	78.2	5.89	5.77	5.80	7.90	7.96	7.99	2	2.00
	16:42		Middle	-	20.90	20.90		8.02	8.02		32.03	32.03		78.3	77.2		5.80	5.72		7.97	8.14		2	
20/3/2015	19:00	Fine	Middle	-	20.90	20.90	21.05	8.05	8.05	8.05	31.72	31.72	31.72	64.0	63.6	63.6	4.73	4.70	4.70	2.99	2.96	2.87	3	2.50
	19:02		Middle	-	21.20	21.20		8.04	8.04		31.71	31.71		63.5	63.2		4.69	4.67		2.77	2.76		2	
23/3/2015	7:45	Fine	Middle	-	19.70	19.70	19.65	8.10	8.10	8.10	32.14	32.14	32.15	67.7	68.3	67.7	5.12	5.17	5.13	4.08	4.13	4.13	7	6.50
	7:47		Middle	-	19.60	19.60		8.09	8.09		32.15	32.15		67.9	66.9		5.14	5.07		4.14	4.15		6	
25/3/2015	8:10	Fine	Middle	-	18.90	18.90	18.90	8.14	8.14	8.14	32.56	32.56	32.56	68.2	68.7	68.8	5.13	5.17	5.18	0.65	0.65	0.66	3	3.00
	8:12		Middle	-	18.90	18.90		8.14	8.14		32.55	32.55		69.1	69.3		5.20	5.21		0.67	0.66		3	
27/3/2015	11:15	Cloudy	Middle	-	20.30	20.30	20.30	8.12	8.12	8.12	32.39	32.39	32.39	66.1	67.0	66.4	4.94	5.00	4.96	2.63	2.63	2.64	5	6.00
	11:17		Middle	-	20.30	20.30		8.11	8.11		32.38	32.38		66.4	66.0		4.97	4.93		2.64	2.64		7	

Remarks:
Single underline denotes exceedance over Action Level.
Double underline denotes exceedance over Limit Level.



**Water Monitoring Result at C1 - HKCEC Extension
Mid-Flood Tide**

Date	Time	Weather Condition	Sampling Depth		Water Temperature			pH			Salinity			DO Saturation		DO		Turbidity		Suspended Solids				
			m		°C		-		ppt		%		mg/L		NTU		mg/L							
					Value	Average	Value	Average	Value	Average	Value	Average	Value	Average	Value	Average	Value	Average						
28/2/2015	10:30	Cloudy	Middle	2.5	18.30	18.30	18.30	8.22	8.22	8.22	32.24	32.24	32.25	70.4	71.3	72.7	5.47	5.53	5.64	2.94	2.95	2.95	2	3.00
	10:32		Middle	2.5	18.30	18.30		8.22	8.22		32.25	32.25		74.0	75.0		5.74	5.82		2.95	2.96		4	
2/3/2015	17:22	Cloudy	Middle	3.0	17.90	17.90	17.90	8.30	8.30	8.31	32.55	32.55	32.54	81.6	80.9	80.4	6.38	6.32	6.28	4.41	4.46	4.46	3	3.00
	17:24		Middle	3.0	17.90	17.90		8.31	8.31		32.53	32.53		80.1	79.0		6.26	6.17		4.47	4.51		3	
5/3/2015	16:56	Cloudy	Middle	3.0	18.10	18.10	18.10	8.31	8.31	8.31	32.48	32.48	32.48	82.6	83.3	83.2	6.42	6.48	6.47	4.31	4.32	4.31	3	2.50
	16:59		Middle	3.0	18.10	18.10		8.31	8.31		32.48	32.48		83.4	83.4		6.49	6.49		4.32	4.30		2	
7/3/2015	16:30	Cloudy	Middle	2.5	18.80	18.80	18.80	8.23	8.23	8.23	32.52	32.52	32.53	82.1	82.1	82.3	6.30	6.30	6.32	3.88	3.89	3.90	4	4.00
	16:32		Middle	2.5	18.80	18.80		8.23	8.23		32.54	32.54		83.0	82.0		6.37	6.29		3.89	3.92		4	
9/3/2015	10:00	Fine	Middle	3.0	19.90	19.90	19.95	8.20	8.20	8.20	32.65	32.65	32.65	84.2	84.2	83.8	6.31	6.31	6.28	5.13	5.11	5.14	4	5.00
	10:02		Middle	3.0	20.00	20.00		8.20	8.20		32.64	32.64		83.6	83.2		6.27	6.24		5.14	5.16		6	
11/3/2015	9:10	Cloudy	Middle	2.5	18.00	18.00	18.00	8.24	8.24	8.24	32.49	32.49	32.50	84.7	84.1	84.1	6.60	6.55	6.56	5.78	5.78	5.75	4	4.50
	9:12		Middle	2.5	18.00	18.00		8.24	8.24		32.50	32.50		84.0	83.7		6.55	6.52		5.76	5.66		5	
13/3/2015	11:10	Cloudy	Middle	2.5	18.40	18.40	18.45	8.10	8.10	8.14	32.45	32.45	32.45	81.7	81.8	81.6	6.31	6.32	6.30	5.97	5.92	5.92	6	5.00
	11:12		Middle	2.5	18.50	18.50		8.18	8.18		32.45	32.45		81.8	81.1		6.32	6.26		5.90	5.90		4	
16/3/2015	14:20	Cloudy	Middle	3.0	20.40	20.40	20.40	8.09	8.09	8.09	32.24	32.24	32.26	79.7	80.7	79.4	5.95	6.02	5.93	4.16	4.19	4.17	4	4.00
	14:22		Middle	3.0	20.40	20.40		8.09	8.09		32.28	32.28		78.7	78.6		5.87	5.86		4.16	4.16		4	
18/3/2015	15:57	Cloudy	Middle	2.5	21.00	21.00	21.10	8.10	8.10	8.10	32.27	32.27	32.21	80.1	79.8	79.3	5.91	5.89	5.85	5.41	5.35	5.30	3	4.00
	15:59		Middle	2.5	21.20	21.20		8.10	8.10		32.15	32.15		79.4	77.9		5.85	5.74		5.23	5.22		5	
20/3/2015	17:09	Fine	Middle	2.5	21.00	21.00	15.78	8.11	8.11	8.11	31.60	31.60	31.60	65.3	65.1	64.3	4.84	4.82	4.76	3.75	3.74	3.73	4	4.50
	17:11		Middle	2.5	0.00	21.10		8.11	8.11		31.60	31.60		64.1	62.7		4.74	4.64		3.72	3.72		5	
23/3/2015	10:14	Fine	Middle	3.0	19.90	19.90	19.95	8.20	8.20	8.21	32.75	32.75	32.75	73.9	74.2	73.7	5.52	5.57	5.52	6.89	6.89	6.88	8	7.50
	10:16		Middle	3.0	20.00	20.00		8.21	8.21		32.75	32.75		73.7	73.0		5.52	5.47		6.89	6.84		7	
25/3/2015	10:10	Fine	Middle	3.0	19.70	19.70	19.65	8.15	8.15	8.17	32.71	32.71	32.72	78.8	80.3	78.8	5.95	6.06	5.95	3.84	3.78	3.78	6	5.50
	10:12		Middle	3.0	19.60	19.60		8.19	8.19		32.72	32.72		79.0	77.2		5.96	5.83		3.74	3.74		5	
27/3/2015	10:35	Cloudy	Middle	3.0	20.00	20.00	20.00	8.17	8.17	8.18	32.39	32.39	32.39	70.4	70.6	70.3	5.29	5.30	5.28	2.17	2.26	2.21	4	3.50
	10:37		Middle	3.0	20.00	20.00		8.18	8.18		32.39	32.39		70.1	70.2		5.26	5.27		2.26	2.14		3	

Remarks:
Single underline denotes exceedance over Action Level.
Double underline denotes exceedance over Limit Level.



**Water Monitoring Result at P1 - HKCEC Phase I
Mid-Flood Tide**

Date	Time	Weather Condition	Sampling Depth		Water Temperature			pH			Salinity			DO Saturation			DO			Turbidity			Suspended Solids	
			m		°C		-		ppt		%		mg/L		NTU		mg/L							
					Value	Average	Value	Average	Value	Average	Value	Average	Value	Average	Value	Average	Value	Average	Value	Average				
28/2/2015	10:51	Cloudy	Middle	2.5	18.10	18.10	18.10	8.21	8.21	8.21	32.25	32.25	32.26	76.4	76.6	76.5	5.87	5.89	5.90	3.37	3.45	3.48	3	4.00
	10:53		Middle	2.5	18.10	18.10		8.21	8.21		32.26	32.26		76.8	76.2		5.90	5.93		3.48	3.63		5	
2/3/2015	17:38	Cloudy	Middle	3.0	18.00	18.00	18.00	8.27	8.27	8.28	32.31	32.31	32.31	78.3	78.0	77.9	6.11	6.09	6.08	4.24	4.01	3.97	4	4.00
	17:40		Middle	3.0	18.00	18.00		8.28	8.28		32.31	32.31		77.8	77.4		6.07	6.04		3.87	3.76		4	
5/3/2015	16:35	Cloudy	Middle	3.0	17.70	17.70	17.70	8.27	8.27	8.27	32.60	32.60	32.60	84.8	84.4	84.6	6.65	6.63	6.64	3.77	3.80	3.79	2	2.00
	16:37		Middle	3.0	17.70	17.70		8.27	8.27		32.60	32.60		84.7	84.6		6.64	6.63		3.80	3.77		<2	
7/3/2015	16:59	Cloudy	Middle	2.5	18.20	18.20	18.25	8.23	8.23	8.23	32.49	32.49	32.49	80.8	80.7	80.5	6.26	6.26	6.24	4.25	4.29	4.37	4	4.50
	17:01		Middle	2.5	18.30	18.30		8.23	8.23		32.48	32.48		80.5	80.0		6.24	6.20		4.48	4.46		5	
9/3/2015	10:30	Fine	Middle	3.0	19.40	19.40	19.40	8.22	8.22	8.22	32.54	32.54	32.55	81.7	82.1	81.8	6.21	6.23	6.21	4.93	4.93	4.92	5	4.50
	10:32		Middle	3.0	19.40	19.40		8.22	8.22		32.55	32.55		82.0	81.4		6.22	6.18		4.92	4.90		4	
11/3/2015	9:34	Cloudy	Middle	2.5	17.30	17.30	17.30	8.22	8.22	8.22	32.62	32.62	32.62	81.2	81.1	81.4	6.42	6.40	6.43	4.38	4.30	4.28	3	3.50
	9:36		Middle	2.5	17.30	17.30		8.22	8.22		32.62	32.62		81.5	81.8		6.43	6.45		4.15	4.28		4	
13/3/2015	11:35	Cloudy	Middle	2.5	17.80	17.80	17.85	8.17	8.17	8.17	32.47	32.47	32.47	80.3	80.5	80.3	6.27	6.29	6.27	4.67	4.68	4.63	6	5.50
	11:37		Middle	2.5	17.90	17.90		8.17	8.17		32.47	32.47		80.3	80.0		6.27	6.26		4.59	4.57		5	
16/3/2015	14:06	Cloudy	Middle	3.0	20.30	20.30	20.40	8.07	8.07	8.07	32.47	32.47	32.42	79.7	78.1	78.9	5.95	5.82	5.88	4.28	4.16	4.19	3	3.00
	14:08		Middle	3.0	20.50	20.50		8.07	8.07		32.36	32.36		78.9	78.8		5.89	5.87		4.15	4.15		3	
18/3/2015	16:09	Cloudy	Middle	2.5	20.40	20.40	20.40	8.09	8.09	8.09	32.20	32.20	32.20	77.1	77.9	78.0	5.74	5.81	5.81	4.57	4.66	4.62	4	5.00
	16:11		Middle	2.5	20.40	20.40		8.09	8.09		32.20	32.20		77.6	79.3		5.78	5.90		4.68	4.58		6	
20/3/2015	16:56	Fine	Middle	2.5	21.70	21.70	21.75	8.10	8.10	8.11	31.57	31.57	31.50	74.7	74.1	73.5	5.44	5.40	5.35	5.06	4.93	4.92	3	3.00
	16:58		Middle	2.5	21.80	21.80		8.11	8.11		31.43	31.43		72.6	72.4		5.29	5.28		4.86	4.84		3	
23/3/2015	9:45	Fine	Middle	3.0	19.30	19.30	19.30	8.18	8.18	8.17	32.26	32.26	32.26	69.9	69.3	69.8	5.33	5.28	5.32	6.54	6.54	6.54	10	10.50
	9:47		Middle	3.0	19.30	19.30		8.16	8.16		32.26	32.26		70.2	69.7		5.35	5.31		6.54	6.54		11	
25/3/2015	10:30	Fine	Middle	3.0	19.60	19.60	19.60	8.19	8.19	8.19	32.49	32.49	32.50	74.0	74.2	74.0	5.59	5.61	5.59	4.73	4.72	4.72	6	6.00
	10:32		Middle	3.0	19.60	19.60		8.19	8.19		32.51	32.51		75.6	72.2		5.46	5.68		4.71	4.71		6	
27/3/2015	10:15	Cloudy	Middle	3.0	20.30	20.30	20.35	8.14	8.14	8.15	32.37	32.37	32.38	73.0	73.5	72.6	5.45	5.49	5.42	1.66	1.65	1.64	4	3.50
	10:17		Middle	3.0	20.40	20.40		8.15	8.15		32.39	32.39		71.2	72.8		5.32	5.42		1.64	1.60		3	

Remarks:
Single underline denotes exceedance over Action Level.
Double underline denotes exceedance over Limit Level.



**Water Monitoring Result at P3 - APA
Mid-Flood Tide**

Date	Time	Weather Condition	Sampling Depth		Water Temperature			pH			Salinity			DO Saturation		DO		Turbidity		Suspended Solids				
			m		°C		-		ppt		%		mg/L		NTU		mg/L							
					Value	Average	Value	Average	Value	Average	Value	Average	Value	Average	Value	Average	Value	Average						
28/2/2015	10:46	Cloudy	Middle	2.5	18.00	18.00	18.00	8.22	8.22	8.22	32.29	32.29	32.29	77.4	77.4	77.5	6.04	6.03	6.04	2.89	2.88	2.88	3	3.50
	10:48		Middle	2.5	18.00	18.00		8.22	8.22		32.29	32.29		77.4	77.8		6.03	6.06		2.87	2.86		4	
2/3/2015	17:34	Cloudy	Middle	3.0	18.00	18.00	18.00	8.27	8.27	8.27	32.33	32.33	32.34	80.0	79.2	78.6	6.24	6.18	6.13	3.12	3.03	3.03	<2	<2
	17:36		Middle	3.0	18.00	18.00		8.27	8.27		32.34	32.34		78.0	77.2		6.08	6.02		3.00	2.96		<2	
5/3/2015	16:40	Cloudy	Middle	3.0	17.80	17.80	17.80	8.29	8.29	8.29	32.63	32.63	32.64	84.5	84.9	84.7	6.61	6.65	6.63	3.60	3.63	3.64	2	3.00
	16:42		Middle	3.0	17.80	17.80		8.29	8.29		32.64	32.64		84.6	84.8		6.62	6.64		3.64	3.68		4	
7/3/2015	16:55	Cloudy	Middle	2.5	18.20	18.20	18.25	8.22	8.22	8.22	32.54	32.54	32.54	78.5	79.0	78.7	6.09	6.13	6.10	8.70	8.76	8.78	13	13.50
	16:57		Middle	2.5	18.30	18.30		8.22	8.22		32.54	32.54		78.6	78.7		6.09	6.10		8.81	8.85		14	
9/3/2015	10:21	Fine	Middle	3.0	19.10	19.10	19.15	8.20	8.20	8.20	32.47	32.47	32.48	79.4	78.7	79.1	6.05	5.99	6.03	5.45	5.46	5.44	5	4.50
	10:23		Middle	3.0	19.20	19.20		8.20	8.20		32.48	32.48		79.1	79.3		6.03	6.04		5.46	5.40		4	
11/3/2015	9:28	Cloudy	Middle	2.5	17.60	17.60	17.55	8.22	8.22	8.22	32.67	32.67	32.67	79.6	79.7	79.7	6.26	6.26	6.27	4.22	4.02	4.06	3	2.50
	9:30		Middle	2.5	17.50	17.50		8.22	8.22		32.67	32.67		79.8	79.7		6.27	6.27		4.00	3.98		2	
13/3/2015	11:27	Cloudy	Middle	2.5	17.80	17.80	17.80	8.16	8.16	8.16	32.40	32.40	32.42	78.6	78.1	78.8	6.15	6.11	6.16	5.35	5.33	5.34	3	3.50
	11:29		Middle	2.5	17.80	17.80		8.16	8.16		32.43	32.43		78.8	79.5		6.16	6.22		5.31	5.36		4	
16/3/2015	14:09	Cloudy	Middle	3.0	19.70	19.70	19.75	8.07	8.07	8.07	32.36	32.36	32.33	75.7	74.5	74.5	5.72	5.62	5.63	4.15	4.28	4.19	2	2.50
	14:11		Middle	3.0	19.80	19.80		8.07	8.07		32.30	32.30		73.9	74.0		5.59	5.58		4.16	4.15		3	
18/3/2015	16:06	Cloudy	Middle	2.5	20.30	20.30	20.35	8.09	8.09	8.09	32.18	32.18	32.18	77.4	77.6	77.4	5.78	5.80	5.78	4.57	4.40	4.44	4	4.50
	16:08		Middle	2.5	20.40	20.40		8.09	8.09		32.18	32.18		77.4	77.1		5.78	5.76		4.40	4.40		5	
20/3/2015	17:00	Fine	Middle	2.5	21.20	21.20	21.25	8.11	8.11	8.11	31.54	31.54	31.52	63.0	63.7	63.8	4.65	4.71	4.71	5.08	5.07	5.06	4	3.50
	17:02		Middle	2.5	21.30	21.30		8.11	8.11		31.50	31.50		64.4	64.1		4.75	4.73		5.03	5.04		3	
23/3/2015	9:53	Fine	Middle	3.0	19.30	19.30	19.30	8.15	8.15	8.15	32.32	32.32	32.32	70.4	69.1	69.9	5.36	5.26	5.32	7.29	7.30	7.33	7	7.00
	9:55		Middle	3.0	19.30	19.30		8.15	8.15		32.32	32.32		70.2	70.0		5.34	5.32		7.35	7.36		7	
25/3/2015	10:26	Fine	Middle	3.0	19.60	19.60	19.55	8.21	8.21	8.20	32.39	32.39	32.45	72.9	72.8	72.7	5.52	5.51	5.51	2.57	2.58	2.58	3	3.50
	10:28		Middle	3.0	19.50	19.50		8.19	8.19		32.50	32.50		72.6	72.5		5.50	5.49		2.58	2.57		4	
27/3/2015	10:20	Cloudy	Middle	3.0	20.10	20.10	20.10	8.16	8.16	8.17	32.44	32.44	32.43	70.7	70.4	70.5	5.30	5.27	5.28	1.35	1.35	1.38	3	3.50
	10:22		Middle	3.0	20.10	20.10		8.17	8.17		32.42	32.42		70.5	70.2		5.28	5.26		1.36	1.45		4	

Remarks:
Single underline denotes exceedance over Action Level.
Double underline denotes exceedance over Limit Level.



**Water Monitoring Result at P4 - SOC
Mid-Flood Tide**

Date	Time	Weather Condition	Sampling Depth		Water Temperature			pH			Salinity			DO Saturation		DO		Turbidity		Suspended Solids				
					°C		-		ppt		%		mg/L		NTU		mg/L							
			m	Value	Average	Value	Average	Value	Average	Value	Average	Value	Average	Value	Average	Value	Average	Value	Average					
28/2/2015	10:40	Cloudy	Middle	2.5	18.00	18.00	18.00	8.22	8.22	8.22	32.29	32.29	32.29	73.8	74.1	73.8	5.76	5.79	5.76	3.25	3.29	3.27	3	3.50
	10:42		Middle	2.5	18.00	18.00	18.00	8.22	8.22	8.22	32.29	32.29	32.29	73.8	73.5	73.8	5.76	5.74	5.76	3.27	3.26	3.27	4	
2/3/2015	17:30	Cloudy	Middle	3.0	17.90	17.90	17.90	8.31	8.31	8.31	32.47	32.47	32.48	82.0	82.1	82.0	6.40	6.41	6.41	4.88	4.85	4.84	4	5.00
	17:32		Middle	3.0	17.90	17.90	17.90	8.31	8.31	8.31	32.48	32.48	32.48	82.2	81.8	82.0	6.42	6.39	6.41	4.82	4.82	4.84	6	
5/3/2015	16:45	Cloudy	Middle	3.0	18.00	18.00	18.00	8.31	8.31	8.31	32.46	32.46	32.47	84.8	85.0	85.1	6.61	6.62	6.63	5.69	5.64	5.65	4	4.00
	16:47		Middle	3.0	18.00	18.00	18.00	8.31	8.31	8.31	32.47	32.47	32.47	85.1	85.3	85.1	6.63	6.64	6.63	5.63	5.62	5.65	4	
7/3/2015	16:45	Cloudy	Middle	2.5	18.40	18.40	18.45	8.23	8.23	8.23	32.53	32.53	32.54	83.2	84.8	84.3	6.41	6.55	6.51	4.58	4.57	4.59	6	5.50
	16:47		Middle	2.5	18.50	18.50	18.45	8.23	8.23	8.23	32.54	32.54	32.54	84.5	84.8	84.3	6.53	6.55	6.51	4.62	4.58	4.59	5	
9/3/2015	10:14	Fine	Middle	3.0	19.40	19.40	19.40	8.20	8.20	8.20	32.51	32.51	32.51	83.1	83.0	83.2	6.31	6.30	6.32	5.76	5.76	5.67	5	5.00
	10:16		Middle	3.0	19.40	19.40	19.40	8.20	8.20	8.20	32.51	32.51	32.51	83.4	83.4	83.2	6.33	6.33	6.32	5.63	5.54	5.67	5	
11/3/2015	9:23	Cloudy	Middle	2.5	17.60	17.60	17.60	8.24	8.24	8.24	32.58	32.58	32.58	84.9	84.9	85.3	6.66	6.47	6.65	4.36	4.37	4.38	4	4.50
	9:25		Middle	2.5	17.60	17.60	17.60	8.24	8.24	8.24	32.58	32.58	32.58	85.7	85.7	85.3	6.73	6.73	6.65	4.38	4.39	4.38	5	
13/3/2015	11:21	Cloudy	Middle	2.5	17.90	17.90	17.90	8.17	8.17	8.17	32.38	32.38	32.38	78.2	78.9	78.6	6.12	6.19	6.15	5.48	5.38	5.38	4	4.00
	11:23		Middle	2.5	17.90	17.90	17.90	8.17	8.17	8.17	32.38	32.38	32.38	79.1	78.1	78.6	6.19	6.10	6.15	5.33	5.31	5.38	4	
16/3/2015	14:12	Cloudy	Middle	3.0	19.80	19.80	19.85	8.09	8.09	8.10	32.27	32.27	32.27	81.7	81.4	80.9	6.15	6.11	6.09	6.22	6.29	6.17	6	5.50
	14:14		Middle	3.0	19.90	19.90	19.85	8.10	8.10	8.10	32.26	32.26	32.27	80.6	80.0	80.9	6.07	6.01	6.09	6.17	6.01	6.17	5	
18/3/2015	16:03	Cloudy	Middle	2.5	20.50	20.50	20.50	8.08	8.08	8.08	32.18	32.18	32.17	81.3	80.0	79.4	6.06	5.95	5.91	5.89	5.89	5.89	4	4.00
	16:05		Middle	2.5	20.50	20.50	20.50	8.07	8.07	8.08	32.15	32.15	32.17	78.6	77.7	79.4	5.86	5.78	5.91	5.89	5.88	5.89	4	
20/3/2015	17:03	Fine	Middle	2.5	20.90	20.90	20.95	8.11	8.11	8.11	31.62	31.62	31.61	66.9	66.2	65.8	4.96	4.91	4.88	5.28	5.28	5.24	5	4.50
	17:05		Middle	2.5	21.00	21.00	20.95	8.11	8.11	8.11	31.60	31.60	31.61	65.4	64.8	65.8	4.85	4.80	4.88	5.25	5.13	5.24	4	
23/3/2015	10:00	Fine	Middle	3.0	19.10	19.10	19.30	8.20	8.20	8.20	32.61	32.61	32.58	70.8	71.3	71.3	5.37	5.40	5.40	7.15	7.19	7.15	7	7.00
	10:02		Middle	3.0	19.50	19.50	19.30	8.20	8.20	8.20	32.55	32.55	32.58	71.7	71.4	71.3	5.43	5.41	5.40	7.19	7.08	7.15	7	
25/3/2015	10:18	Fine	Middle	3.0	19.50	19.50	19.45	8.22	8.22	8.22	32.61	32.61	32.65	74.2	74.5	73.9	5.62	5.64	5.59	3.08	3.09	3.17	5	4.50
	10:20		Middle	3.0	19.40	19.40	19.45	8.22	8.22	8.22	32.68	32.68	32.65	73.9	73.0	73.9	5.60	5.50	5.59	3.32	3.18	3.17	4	
27/3/2015	10:25	Cloudy	Middle	3.0	20.00	20.00	20.05	8.18	8.18	8.19	32.42	32.42	32.42	70.5	71.1	70.7	5.29	5.33	5.30	1.96	1.91	1.89	3	2.50
	10:27		Middle	3.0	20.10	20.10	20.05	8.19	8.19	8.19	32.42	32.42	32.42	70.6	70.5	70.7	5.30	5.29	5.30	1.87	1.83	1.89	2	

Remarks:
Single underline denotes exceedance over Action Level.
Double underline denotes exceedance over Limit Level.



**Water Monitoring Result at P5 - WCT / RT / IT
Mid-Flood Tide**

Date	Time	Weather Condition	Sampling Depth		Water Temperature			pH			Salinity			DO Saturation			DO			Turbidity			Suspended Solids	
			m		°C		-		ppt		%		mg/L		NTU		mg/L							
					Value	Average	Value	Average	Value	Average	Value	Average	Value	Average	Value	Average	Value	Average	Value	Average				
28/2/2015	10:36	Cloudy	Middle	2.5	18.00	18.00	18.05	8.24	8.24	8.24	32.28	32.28	32.28	77.0	76.8	77.4	6.00	5.99	6.03	3.70	3.74	3.67	3	3.50
	10:38		Middle	2.5	18.10	18.10		8.24	8.24		32.28	32.28		77.5	78.1		6.04	6.09		3.70	3.54		4	
2/3/2015	17:26	Cloudy	Middle	3.0	17.90	17.90	17.90	8.32	8.32	8.32	32.53	32.53	32.53	82.4	81.5	81.1	6.43	6.36	6.33	4.69	4.67	4.65	4	4.00
	17:28		Middle	3.0	17.90	17.90		8.32	8.32		32.53	32.53		80.6	80.0		6.29	6.24		4.64	4.61		4	
5/3/2015	16:51	Cloudy	Middle	3.0	18.10	18.10	18.10	8.32	8.32	8.32	32.60	32.60	32.60	83.7	84.1	84.0	6.51	6.54	6.53	5.30	5.23	5.24	2	2.00
	16:53		Middle	3.0	18.10	18.10		8.32	8.32		32.60	32.60		83.9	84.2		6.53	6.55		5.22	5.22		2	
7/3/2015	16:40	Cloudy	Middle	2.5	18.40	18.40	18.40	8.22	8.22	8.22	32.55	32.55	32.55	80.9	81.5	81.3	6.26	6.30	6.29	5.08	5.00	4.95	6	6.00
	16:42		Middle	2.5	18.40	18.40		8.22	8.22		32.55	32.55		81.3	81.6		6.29	6.31		4.88	4.84		6	
9/3/2015	10:07	Fine	Middle	3.0	19.40	19.40	19.45	8.20	8.20	8.20	32.39	32.39	32.39	80.3	80.3	80.0	6.09	6.09	6.07	4.28	4.29	4.33	8	8.00
	10:09		Middle	3.0	19.50	19.50		8.20	8.20		32.39	32.39		80.0	79.2		6.08	6.00		4.34	4.39		8	
11/3/2015	9:17	Cloudy	Middle	2.5	17.90	17.90	17.85	8.25	8.25	8.25	32.61	32.61	32.62	83.8	84.0	84.1	6.57	6.58	6.58	6.40	6.28	6.26	8	7.00
	9:19		Middle	2.5	17.80	17.80		8.25	8.25		32.62	32.62		84.1	84.3		6.58	6.59		6.16	6.18		6	
13/3/2015	11:15	Cloudy	Middle	2.5	18.00	18.00	18.05	8.20	8.20	8.20	32.46	32.46	32.46	83.2	83.7	82.9	6.48	6.52	6.46	8.14	8.24	8.20	9	10.00
	11:17		Middle	2.5	18.10	18.10		8.20	8.20		32.46	32.46		83.6	80.9		6.52	6.30		8.25	8.16		11	
16/3/2015	14:16	Cloudy	Middle	3.0	20.00	20.00	20.05	8.09	8.09	8.09	32.27	32.27	32.27	83.8	81.2	81.9	6.29	6.10	6.15	5.75	5.75	5.66	5	4.50
	14:18		Middle	3.0	20.10	20.10		8.09	8.09		32.27	32.27		81.2	81.3		6.11	6.11		5.66	5.48		4	
18/3/2015	16:00	Cloudy	Middle	2.5	20.50	20.50	20.60	8.10	8.10	8.10	32.19	32.19	32.19	73.0	72.7	72.8	5.43	5.41	5.42	5.57	5.56	5.58	5	6.00
	16:02		Middle	2.5	20.70	20.70		8.10	8.10		32.19	32.19		72.9	72.7		5.42	5.41		5.58	5.61		7	
20/3/2015	17:07	Fine	Middle	2.5	21.10	21.10	21.15	8.12	8.12	8.12	31.57	31.57	31.57	66.6	66.1	66.1	4.90	4.89	4.89	4.64	4.62	4.63	3	3.00
	17:09		Middle	2.5	21.20	21.20		8.12	8.12		31.57	31.57		66.1	65.7		4.89	4.86		4.59	4.67		3	
23/3/2015	10:05	Fine	Middle	3.0	19.50	19.50	19.55	8.23	8.23	8.23	32.77	32.77	32.74	70.3	72.0	71.2	5.31	5.44	5.37	7.96	7.97	7.97	7	7.50
	10:07		Middle	3.0	19.60	19.60		8.23	8.23		32.71	32.71		71.2	71.2		5.37	5.37		7.98	7.97		8	
25/3/2015	10:13	Fine	Middle	3.0	19.60	19.60	19.55	8.21	8.21	8.22	32.79	32.79	32.79	80.7	82.1	81.2	6.10	6.20	6.14	3.89	3.93	3.94	5	4.50
	10:15		Middle	3.0	19.50	19.50		8.23	8.23		32.79	32.79		82.0	80.1		6.18	6.06		3.97	3.97		4	
27/3/2015	10:30	Cloudy	Middle	3.0	20.10	20.10	20.10	8.19	8.19	8.19	32.41	32.41	32.41	67.3	67.9	67.8	5.05	5.09	5.09	1.64	1.64	1.65	4	4.00
	10:32		Middle	3.0	20.10	20.10		8.19	8.19		32.41	32.41		67.9	68.1		5.10	5.11		1.65	1.65		4	

Remarks:
Single underline denotes exceedance over Action Level.
Double underline denotes exceedance over Limit Level.



**Water Monitoring Result at RW21-P789 - Sun Hung Kai Centre
Mid-Flood Tide**

Date	Time	Weather Condition	Sampling Depth		Water Temperature			pH			Salinity			DO Saturation		DO		Turbidity		Suspended Solids				
			m		°C		-		ppt		%		mg/L		NTU		mg/L							
					Value	Average	Value	Average	Value	Average	Value	Average	Value	Average	Value	Average	Value	Average						
28/2/2015	11:00	Cloudy	Middle	3.0	18.10	18.10	18.15	8.27	8.27	8.27	32.29	32.29	32.30	78.8	78.9	79.1	6.13	6.14	6.15	2.94	2.78	2.84	4	4.50
	11:02		Middle	3.0	18.20	18.20		8.27	8.27		32.30	32.30		79.2	79.3		6.16	6.17		2.78	2.86		5	
2/3/2015	15:45	Cloudy	Middle	3.0	18.20	19.20	18.50	8.26	8.26	8.26	32.25	32.25	32.25	87.8	87.5	87.0	6.82	6.80	6.75	5.63	5.63	5.65	4	4.50
	15:47		Middle	3.0	18.30	18.30		8.26	8.26		32.25	32.25		86.9	85.8		6.74	6.65		5.64	5.70		5	
5/3/2015	17:30	Cloudy	Middle	3.0	18.00	18.00	18.00	8.30	8.30	8.31	32.47	32.47	32.47	79.9	79.4	78.9	6.21	6.19	6.14	5.34	5.35	5.41	3	3.50
	17:32		Middle	3.0	18.00	18.00		8.31	8.31		32.47	32.47		78.6	77.5		6.10	6.04		5.41	5.54		4	
7/3/2015	19:25	Cloudy	Middle	3.5	18.30	18.30	18.30	7.75	7.75	7.76	31.74	31.74	31.88	84.8	81.4	83.1	6.83	6.31	6.50	7.67	7.63	7.57	6	6.00
	19:26		Middle	3.5	18.30	18.30		7.76	7.76		32.02	32.02		82.9	83.4		6.42	6.44		7.45	7.52		6	
9/3/2015	7:30	Fine	Middle	3.0	18.40	18.40	18.40	8.22	8.22	8.22	32.47	32.47	32.48	84.7	84.9	84.7	6.55	6.56	6.54	5.62	5.62	5.62	6	6.50
	7:32		Middle	3.0	18.40	18.40		8.22	8.22		32.48	32.48		84.8	84.2		6.55	6.51		5.62	5.63		7	
11/3/2015	9:47	Cloudy	Middle	3.0	17.90	17.90	17.85	8.26	8.26	8.26	32.53	32.53	32.55	77.8	77.5	77.8	6.07	6.05	6.07	8.15	8.15	<u>8.15</u>	8	7.50
	9:48		Middle	3.0	17.80	17.80		8.26	8.26		32.57	32.57		77.8	78.1		6.07	6.09		8.14	8.14		7	
13/3/2015	7:25	Cloudy	Middle	3.0	17.80	17.80	17.75	8.16	8.16	8.18	32.69	32.69	32.66	81.0	80.5	80.5	6.34	6.29	6.30	3.74	3.73	3.75	3	3.00
	7:27		Middle	3.0	17.70	17.70		8.19	8.19		32.62	32.62		80.2	80.4		6.28	6.29		3.77	3.76		3	
16/3/2015	14:24	Cloudy	Middle	3.0	19.70	19.70	19.75	8.09	8.09	8.09	32.31	32.31	32.27	74.8	74.2	74.1	5.65	5.60	5.60	5.12	5.11	5.09	3	3.50
	14:26		Middle	3.0	19.80	19.80		8.09	8.09		32.23	32.23		74.1	73.2		5.59	5.54		5.07	5.06		4	
18/3/2015	16:15	Cloudy	Middle	3.0	19.80	19.80	19.85	8.08	8.08	8.09	32.16	32.16	32.17	81.3	81.6	81.0	6.13	6.16	6.11	8.84	8.93	<u>8.92</u>	6	5.50
	16:17		Middle	3.0	19.90	19.90		8.09	8.09		32.17	32.17		80.7	80.5		6.08	6.07		8.95	8.95		5	
20/3/2015	17:20	Fine	Middle	3.5	20.90	20.90	20.90	8.13	8.13	8.13	31.61	31.61	31.61	72.0	72.3	71.9	5.35	5.37	5.34	5.47	5.46	5.52	5	4.50
	17:22		Middle	3.5	20.90	20.90		8.13	8.13		31.61	31.61		71.9	71.4		5.32	5.30		5.55	5.61		4	
23/3/2015	7:25	Fine	Middle	3.5	19.70	19.70	19.70	8.14	8.14	8.14	32.22	32.22	32.22	68.2	68.5	68.2	5.16	5.20	5.17	7.62	7.61	7.65	6	6.50
	7:27		Middle	3.5	19.70	19.70		8.14	8.14		32.22	32.22		68.5	67.7		5.20	5.12		7.68	7.67		7	
25/3/2015	7:45	Fine	Middle	3.0	19.60	19.60	19.60	8.20	8.20	8.21	32.56	32.56	32.57	72.4	72.8	72.4	5.47	5.50	5.47	2.73	2.64	2.67	3	3.50
	7:47		Middle	3.0	19.60	19.60		8.21	8.21		32.58	32.58		72.3	72.1		5.47	5.45		2.64	2.65		4	
27/3/2015	11:00	Cloudy	Middle	3.5	20.10	20.10	20.10	8.19	8.19	8.19	32.57	32.57	32.57	71.5	72.4	71.7	5.35	5.42	5.37	4.05	4.01	4.06	6	6.50
	11:02		Middle	3.5	20.10	20.10		8.19	8.19		32.57	32.57		71.7	71.0		5.37	5.32		4.13	4.05		7	

Remarks:
Single underline denotes exceedance over Action Level.
Double underline denotes exceedance over Limit Level.



**Water Monitoring Result at WSD19 - Sheung Wan
Mid-Flood Tide**

Date	Time	Weather Condition	Sampling Depth		Water Temperature			pH			Salinity			DO Saturation			DO			Turbidity			Suspended Solids	
			m		°C		-		ppt		%		mg/L		NTU		mg/L							
					Value	Average	Value	Average	Value	Average	Value	Average	Value	Average	Value	Average	Value	Average	Value	Average				
28/2/2015	14:35	Cloudy	Middle	3.0	18.50	18.50	18.45	8.21	8.21	8.21	32.26	32.26	32.26	81.8	82.0	81.7	6.32	6.34	6.31	5.10	5.09	5.10	5	4.50
	14:37		Middle	3.0	18.40	18.40		8.21	8.21		32.26	32.26		81.5	81.3		6.29	6.28		5.10	5.10		4	
2/3/2015	16:35	Cloudy	Middle	3.5	18.10	18.10	18.10	8.24	8.24	8.24	32.31	32.31	32.29	85.6	86.6	85.8	6.53	6.74	6.62	6.43	6.38	6.34	4	3.50
	16:37		Middle	3.5	18.10	18.10		8.24	8.24		32.27	32.27		85.7	85.4		6.67	6.53		6.27	6.28		3	
5/3/2015	16:00	Cloudy	Middle	3.0	18.00	18.00	18.00	8.30	8.30	8.30	32.52	32.52	32.52	78.3	78.0	78.0	6.10	6.08	6.07	6.31	6.19	6.25	5	5.50
	16:02		Middle	3.0	18.00	18.00		8.30	8.30		32.52	32.52		78.0	77.5		6.07	6.03		6.28	6.20		6	
7/3/2015	20:00	Cloudy	Middle	3.0	18.20	18.20	18.20	7.87	7.87	7.87	32.26	32.26	32.61	82.5	82.8	83.2	6.39	6.42	6.44	6.10	6.26	6.23	4	5.00
	20:01		Middle	3.0	18.20	18.20		7.87	7.87		32.96	32.96		83.8	83.6		6.48	6.47		6.35	6.20		6	
9/3/2015	8:15	Fine	Middle	3.5	18.90	18.90	18.90	8.20	8.20	8.20	32.38	32.38	32.38	74.9	75.2	75.3	6.75	6.78	6.78	7.45	7.57	7.53	6	6.50
	8:17		Middle	3.5	18.90	18.90		8.20	8.20		32.37	32.37		75.5	75.4		6.80	6.79		7.58	7.53		7	
11/3/2015	8:35	Cloudy	Middle	3.0	18.00	18.00	18.00	8.21	8.21	8.21	32.72	32.72	32.73	82.0	81.7	81.4	6.39	6.37	6.35	7.76	7.68	7.71	7	7.50
	8:37		Middle	3.0	18.00	18.00		8.21	8.21		32.73	32.73		81.1	80.9		6.32	6.31		7.69	7.72		8	
13/3/2015	11:50	Cloudy	Middle	3.5	18.20	18.20	18.20	8.17	8.17	8.17	32.53	32.53	32.53	74.6	74.4	74.2	5.78	5.77	5.75	6.82	6.82	6.82	4	4.50
	11:52		Middle	3.5	18.20	18.20		8.17	8.17		32.53	32.53		74.4	73.4		5.77	5.69		6.83	6.82		5	
16/3/2015	11:20	Cloudy	Middle	3.0	20.20	20.20	20.35	8.12	8.12	8.13	32.53	32.53	32.52	79.7	80.0	79.5	5.95	5.97	5.93	8.01	7.99	7.99	6	6.00
	11:22		Middle	3.0	20.50	20.50		8.13	8.13		32.51	32.51		79.3	78.8		5.91	5.87		7.98	7.96		6	
18/3/2015	15:05	Cloudy	Middle	3.0	21.20	21.20	21.55	8.14	8.14	8.14	32.24	32.24	32.18	85.1	85.8	85.5	6.22	6.27	6.25	6.56	6.47	6.57	9	9.00
	15:07		Middle	3.0	21.90	21.90		8.13	8.13		32.12	32.12		85.4	85.7		6.24	6.27		6.62	6.64		9	
20/3/2015	16:04	Fine	Middle	3.0	22.40	22.40	22.55	8.10	8.10	8.10	31.49	31.49	31.39	63.0	64.4	63.0	4.54	4.65	4.54	10.01	9.98	<u>10.01</u>	8	7.50
	16:06		Middle	3.0	22.70	22.70		8.10	8.10		31.29	31.29		63.6	61.1		4.59	4.38		9.97	10.07		7	
23/3/2015	8:25	Fine	Middle	3.5	19.70	19.70	19.70	8.15	8.15	8.15	32.12	32.12	32.12	66.6	68.6	67.8	5.05	5.18	5.13	7.50	7.49	7.50	8	8.00
	8:27		Middle	3.5	19.70	19.70		8.15	8.15		32.12	32.12		68.2	67.9		5.16	5.14		7.52	7.50		8	
25/3/2015	9:45	Fine	Middle	3.5	19.80	19.80	19.75	8.20	8.20	8.20	32.65	32.65	32.65	68.5	69.4	68.4	5.16	5.23	5.16	5.30	5.29	5.21	5	6.00
	9:47		Middle	3.5	19.70	19.70		8.20	8.20		32.65	32.65		68.2	67.6		5.14	5.09		5.12	5.11		7	
27/3/2015	9:35	Cloudy	Middle	3.5	20.10	20.10	20.15	8.14	8.14	8.15	32.49	32.49	32.50	68.4	68.1	68.4	5.12	5.10	5.12	3.64	3.64	3.61	6	5.50
	9:37		Middle	3.5	20.20	20.20		8.16	8.16		32.50	32.50		68.2	68.7		5.10	5.14		3.59	3.56		5	

Remarks:
Single underline denotes exceedance over Action Level.
Double underline denotes exceedance over Limit Level.



**Water Monitoring Result at C1 - HKCEC
Mid-Ebb Tide**

Date	Time	Weather Condition	Sampling Depth		Water Temperature			pH			Salinity		DO Saturation		DO		Turbidity		Suspended Solids					
					°C			-			ppt		%		mg/L		NTU		mg/L					
					Value	Average		Value	Average		Value	Average	Value	Average	Value	Average	Value	Average	Value	Average				
28/2/2015	22:17	Cloudy	Middle	2.5	19.10	19.10	19.10	7.88	7.88	7.88	32.63	32.63	32.64	80.7	81.4	81.3	6.15	6.20	6.19	3.93	4.18	4.12	6	6.00
	22:18		Middle	2.5	19.10	19.10		7.88	7.88		32.64	32.64		81.6	81.3		6.21	6.20		4.23	4.12		6	
2/3/2015	0:44	Cloudy	Middle	2.0	19.90	19.90	19.90	7.94	7.94	7.95	25.38	25.38	25.39	90.2	90.8	89.7	6.95	7.00	6.91	3.52	3.16	3.25	4	4.00
	0:45		Middle	2.0	19.90	19.90		7.95	7.95		25.39	25.39		89.1	88.6		6.87	6.83		3.10	3.23		4	
5/3/2015	11:33	Cloudy	Middle	3.0	17.90	17.90	17.90	8.29	8.29	8.29	32.46	32.46	32.46	79.1	77.7	77.3	6.18	6.07	6.04	3.62	3.56	3.59	<2	2.00
	11:35		Middle	3.0	17.90	17.90		8.29	8.29		32.46	32.46		76.7	75.5		5.99	5.90		3.57	3.60		2	
7/3/2015	11:50	Cloudy	Middle	3.0	18.40	18.40	18.40	8.26	8.26	8.26	32.63	32.63	32.63	84.7	84.7	84.5	6.55	6.55	6.53	5.29	5.13	5.14	5	4.50
	11:52		Middle	3.0	18.40	18.40		8.26	8.26		32.63	32.63		84.3	84.1		6.52	6.50		5.08	5.06		4	
9/3/2015	14:45	Fine	Middle	3.0	20.50	20.50	20.60	8.16	8.16	8.16	32.61	32.61	32.55	82.2	82.2	82.2	6.09	6.09	6.09	5.10	5.07	5.08	7	7.00
	14:47		Middle	3.0	20.70	20.70		8.16	8.16		32.49	32.49		82.2	82.1		6.09	6.08		5.07	5.08		7	
11/3/2015	15:00	Cloudy	Middle	2.5	19.10	19.10	19.10	8.24	8.24	8.24	32.70	32.70	32.70	82.4	82.8	82.5	6.40	6.43	6.41	5.38	5.38	5.36	4	5.00
	15:02		Middle	2.5	19.10	19.10		8.24	8.24		32.70	32.70		82.6	82.2		6.41	6.39		5.34	5.34		6	
13/3/2015	15:37	Cloudy	Middle	2.5	18.10	18.10	18.10	8.21	8.21	8.21	32.59	32.59	32.59	81.9	81.9	82.0	6.37	6.37	6.38	5.25	5.12	5.14	3	3.50
	15:39		Middle	2.5	18.10	18.10		8.21	8.21		32.59	32.59		81.9	82.1		6.37	6.39		5.11	5.08		4	
16/3/2015	21:58	Cloudy	Middle	2.0	20.10	20.10	20.15	7.96	7.96	7.96	32.77	32.77	32.78	80.4	81.1	80.8	6.00	6.06	6.03	5.44	5.48	5.46	5	5.00
	21:59		Middle	2.0	20.20	20.20		7.96	7.96		32.78	32.78		80.7	80.8		6.02	6.03		5.50	5.40		5	
18/3/2015	11:05	Cloudy	Middle	2.5	19.90	19.90	19.95	7.79	7.79	7.87	32.01	32.01	32.02	69.3	70.8	69.8	5.22	5.33	5.25	4.99	4.82	4.85	4	3.50
	11:07		Middle	2.5	20.00	20.00		7.94	7.94		32.02	32.02		70.2	68.8		5.28	5.18		4.81	4.78		3	
20/3/2015	13:54	Fine	Middle	0.6	21.00	21.00	21.05	8.08	8.08	8.09	31.90	31.90	31.90	75.2	75.5	74.8	5.56	5.57	5.52	6.55	6.29	6.36	6	6.00
	13:56		Middle	2.0	21.10	21.10		8.09	8.09		31.89	31.89		74.8	73.5		5.52	5.42		6.29	6.29		6	
23/3/2015	15:00	Cloudy	Middle	2.5	20.60	20.60	20.65	8.14	8.14	8.15	32.35	32.35	32.35	74.9	75.5	74.9	5.56	5.60	5.56	4.30	4.23	4.19	5	5.50
	15:02		Middle	2.5	20.70	20.70		8.15	8.15		32.35	32.35		74.5	74.5		5.54	5.53		4.16	4.05		6	
25/3/2015	15:50	Cloudy	Middle	3.0	19.70	19.70	19.70	8.26	8.26	8.26	32.90	32.90	32.90	71.0	70.5	71.1	5.35	5.31	5.36	3.74	3.64	3.65	5	4.00
	15:52		Middle	3.0	19.70	19.70		8.26	8.26		32.90	32.90		71.3	71.6		5.37	5.39		3.64	3.56		3	
27/3/2015	17:10	Fine	Middle	2.5	21.00	21.00	21.15	8.16	8.16	8.16	32.63	32.63	32.63	74.3	74.3	73.8	5.46	5.45	5.41	1.61	1.56	1.59	6	5.00
	17:12		Middle	2.5	21.30	21.30		8.16	8.16		32.63	32.63		73.7	72.8		5.40	5.33		1.59	1.61		4	

Remarks:
Single underline denotes exceedance over Action Level.
Double underline denotes exceedance over Limit Level.



**Water Monitoring Result at P1 - HKCEC Phase I
Mid-Ebb Tide**

Date	Time	Weather Condition	Sampling Depth		Water Temperature		pH			Salinity		DO Saturation		DO		Turbidity		Suspended Solids						
					°C		-		ppt		%		mg/L		NTU		mg/L							
			m	Value	Average	Value	Average	Value	Average	Value	Average	Value	Average	Value	Average	Value	Average	Value	Average					
28/2/2015	21:39	Cloudy	Middle	2.5	18.90	18.90	18.90	7.95	7.95	7.96	32.76	32.76	32.76	81.1	81.5	81.8	6.20	6.23	6.25	3.28	3.38	3.23	10	11.00
	21:40		Middle	2.5	18.90	18.90		7.96	7.96		32.76	32.76		82.2	82.3		6.28	6.29		3.16	3.09		12	
2/3/2015	0:12	Cloudy	Middle	2.0	19.20	19.20	19.20	8.06	8.06	8.07	26.23	26.23	26.26	89.6	87.0	86.5	7.03	6.83	6.78	2.10	2.50	2.23	<2	2.00
	0:13		Middle	2.0	19.20	19.20		8.07	8.07		26.29	26.29		84.9	84.3		6.66	6.61		2.17	2.14		2	
5/3/2015	11:47	Cloudy	Middle	3.0	17.80	17.80	17.80	8.31	8.31	8.31	32.53	32.53	32.54	79.7	79.9	79.7	6.25	6.28	6.26	5.57	5.55	5.58	3	3.50
	11:49		Middle	3.0	17.80	17.80		8.31	8.31		32.55	32.55		80.0	79.2		6.27	6.22		5.59	5.61		4	
7/3/2015	11:30	Cloudy	Middle	3.0	18.00	18.00	18.00	8.27	8.27	8.28	32.63	32.63	32.63	83.4	84.1	84.0	6.49	6.55	6.54	6.48	6.45	6.45	6	5.50
	11:32		Middle	3.0	18.00	18.00		8.28	8.28		32.63	32.63		84.5	84.0		6.57	6.54		6.43	6.43		5	
9/3/2015	14:24	Fine	Middle	3.0	19.60	19.60	19.65	8.18	8.18	8.18	32.52	32.52	32.52	81.9	81.4	81.2	6.19	6.16	6.13	5.38	5.54	5.53	6	6.00
	14:26		Middle	3.0	19.70	19.70		8.18	8.18		32.52	32.52		80.9	80.4		6.11	6.07		5.59	5.60		6	
11/3/2015	14:41	Cloudy	Middle	2.5	17.70	17.70	17.70	8.29	8.29	8.29	32.76	32.76	32.76	88.1	88.4	88.4	6.89	6.91	6.92	6.90	6.89	6.89	7	6.00
	14:43		Middle	2.5	17.70	17.70		8.29	8.29		32.76	32.76		88.5	88.7		6.93	6.94		6.89	6.89		5	
13/3/2015	15:15	Cloudy	Middle	2.5	18.00	18.00	18.05	8.22	8.22	8.22	32.66	32.66	32.65	83.7	83.3	83.2	6.51	6.47	6.46	6.95	6.82	6.83	7	6.00
	15:17		Middle	2.5	18.10	18.10		8.22	8.22		32.64	32.64		83.2	82.7		6.46	6.40		6.82	6.71		5	
16/3/2015	21:25	Cloudy	Middle	2.0	20.30	20.30	20.35	7.92	7.92	7.93	32.59	32.59	32.50	75.6	75.8	75.9	5.67	5.68	5.67	4.53	4.61	4.54	5	6.00
	21:26		Middle	2.0	20.40	20.40		7.93	7.93		32.40	32.40		75.4	76.9		5.61	5.72		4.55	4.47		7	
18/3/2015	11:30	Cloudy	Middle	2.5	19.30	19.30	19.30	8.07	8.07	8.08	32.22	32.22	32.20	85.2	83.5	83.2	6.50	6.37	6.34	3.05	3.06	3.02	6	5.50
	11:32		Middle	2.5	19.30	19.30		8.09	8.09		32.18	32.18		82.1	81.8		6.26	6.24		3.02	2.94		5	
20/3/2015	13:31	Fine	Middle	2.0	22.30	22.30	22.30	8.07	8.07	8.07	31.91	31.91	31.91	83.7	83.0	83.6	6.04	5.99	6.03	7.08	7.07	7.04	8	7.50
	13:33		Middle	2.0	22.30	22.30		8.07	8.07		31.91	31.91		83.6	83.9		6.03	6.04		7.01	7.00		7	
23/3/2015	14:35	Cloudy	Middle	2.5	21.50	21.50	21.65	8.14	8.14	8.15	32.32	32.32	32.32	79.2	77.5	77.3	5.77	5.64	5.63	3.37	3.45	3.43	4	5.00
	14:37		Middle	2.5	21.80	21.80		8.15	8.15		32.31	32.31		76.5	76.0		5.57	5.53		3.45	3.45		6	
25/3/2015	15:30	Cloudy	Middle	3.0	19.70	19.70	19.70	8.24	8.24	8.24	32.79	32.79	32.79	74.0	75.1	74.4	5.58	5.66	5.61	2.63	2.79	2.64	7	7.00
	15:32		Middle	3.0	19.70	19.70		8.24	8.24		32.79	32.79		74.1	74.2		5.59	5.59		2.51	2.61		7	
27/3/2015	16:45	Fine	Middle	2.5	20.90	20.90	20.95	8.18	8.18	8.18	32.53	32.53	32.53	73.5	74.1	74.2	5.32	5.46	5.45	1.60	1.65	1.63	2	2.00
	16:47		Middle	2.5	21.00	21.00		8.18	8.18		32.53	32.53		74.5	74.6		5.50	5.50		1.64	1.64		<2	

Remarks:
Single underline denotes exceedance over Action Level.
Double underline denotes exceedance over Limit Level.



**Water Monitoring Result at P3 - APA
Mid-Ebb Tide**

Date	Time	Weather Condition	Sampling Depth		Water Temperature			pH			Salinity		DO Saturation		DO		Turbidity		Suspended Solids					
					°C			-			ppt		%		mg/L		NTU		mg/L					
					Value	Average		Value	Average		Value	Average	Value	Average	Value	Average	Value	Average	Value	Average				
28/2/2015	21:47	Cloudy	Middle	2.5	18.90	18.90	18.90	7.98	7.99	7.99	32.76	32.76	32.77	81.6	82.4	82.4	6.24	6.30	6.30	3.73	3.63	3.71	4	4.00
	21:48		Middle	2.5	18.90	18.90		7.99	7.99		32.78	32.78		82.8	82.7		6.32	6.32		3.72	3.77		4	
2/3/2015	0:20	Cloudy	Middle	2.0	19.40	19.40	19.40	8.05	8.05	8.05	26.47	26.47	26.47	85.4	85.9	85.7	6.62	6.64	6.63	3.23	3.12	3.09	2	2.50
	0:21		Middle	2.0	19.40	19.40		8.05	8.05		26.47	26.47		86.1	85.5		6.64	6.60		3.05	2.95		3	
5/3/2015	11:43	Cloudy	Middle	3.0	17.70	17.70	17.70	8.31	8.31	8.31	32.52	32.52	32.52	78.1	78.2	77.8	6.12	6.13	6.10	5.87	5.65	5.62	3	3.00
	11:45		Middle	3.0	17.70	17.70		8.31	8.31		32.52	32.52		77.8	77.2		6.09	6.05		5.48	5.48		3	
7/3/2015	11:35	Cloudy	Middle	3.0	18.10	18.10	18.10	8.27	8.27	8.27	32.69	32.69	32.65	81.9	81.9	81.8	6.39	6.39	6.37	6.13	6.28	6.26	7	6.50
	11:37		Middle	3.0	18.10	18.10		8.27	8.27		32.60	32.60		81.6	81.6		6.35	6.35		6.35	6.29		6	
9/3/2015	14:30	Fine	Middle	3.0	19.70	19.70	19.75	8.17	8.17	8.18	32.53	32.53	32.53	83.3	83.2	83.3	6.28	6.28	6.28	5.01	5.00	4.89	5	5.00
	14:32		Middle	3.0	19.80	19.80		8.18	8.18		32.52	32.52		83.4	83.3		6.29	6.28		4.81	4.75		5	
11/3/2015	14:45	Cloudy	Middle	2.5	17.70	17.70	17.70	8.28	8.28	8.28	32.77	32.77	32.77	83.9	84.3	84.1	6.57	6.59	6.58	7.62	7.52	7.50	6	6.00
	14:47		Middle	2.5	17.70	17.70		8.28	8.28		32.77	32.77		84.1	84.2		6.58	6.59		7.47	7.40		6	
13/3/2015	15:31	Cloudy	Middle	2.5	17.80	17.80	17.80	8.22	8.22	8.22	32.62	32.62	32.62	81.8	81.8	81.7	6.39	6.39	6.38	6.14	6.00	6.04	5	5.00
	15:33		Middle	2.5	17.80	17.80		8.22	8.22		32.62	32.62		81.5	81.5		6.37	6.37		6.00	6.00		5	
16/3/2015	21:33	Cloudy	Middle	2.0	20.40	20.40	20.40	7.92	7.92	7.92	32.31	32.31	32.29	71.7	72.0	72.7	5.37	5.40	5.45	4.87	4.57	4.75	6	5.00
	21:34		Middle	2.0	20.40	20.40		7.92	7.92		32.27	32.27		73.3	73.8		5.49	5.52		4.74	4.82		4	
18/3/2015	11:25	Cloudy	Middle	2.5	19.40	19.40	19.35	8.04	8.04	8.06	32.19	32.19	32.19	76.0	73.2	73.5	5.79	5.58	5.60	3.63	3.68	3.68	7	6.50
	11:27		Middle	2.5	19.30	19.30		8.08	8.08		32.18	32.18		72.6	72.1		5.53	5.50		3.70	3.72		6	
20/3/2015	13:37	Fine	Middle	2.0	21.20	21.20	21.30	8.07	8.07	8.08	31.90	31.90	31.90	83.7	84.4	84.3	6.04	6.20	6.17	5.07	5.06	5.14	5	5.00
	13:39		Middle	2.0	21.40	21.40		8.08	8.08		31.89	31.89		84.6	84.4		6.22	6.21		5.21	5.21		5	
23/3/2015	14:41	Cloudy	Middle	2.5	20.70	20.70	20.80	8.15	8.15	8.15	32.42	32.42	32.42	74.6	73.4	73.9	5.42	5.35	5.38	4.54	4.36	4.38	5	5.50
	14:43		Middle	2.5	20.90	20.90		8.15	8.15		32.42	32.42		74.0	73.5		5.39	5.36		4.32	4.30		6	
25/3/2015	15:35	Cloudy	Middle	3.0	19.70	19.70	19.70	8.25	8.25	8.25	32.80	32.80	32.80	73.4	72.9	72.8	5.53	5.49	5.48	3.14	3.14	3.14	7	6.00
	15:37		Middle	3.0	19.70	19.70		8.25	8.25		32.80	32.80		72.0	72.7		5.43	5.48		3.14	3.15		5	
27/3/2015	16:50	Fine	Middle	2.5	20.80	20.80	20.80	8.18	8.18	8.18	32.49	32.49	32.49	73.5	72.5	73.3	5.41	5.31	5.40	1.83	1.82	1.82	3	3.50
	16:52		Middle	2.5	20.80	20.80		8.18	8.18		32.49	32.49		73.3	73.8		5.40	5.46		1.81	1.81		4	

Remarks:
Single underline denotes exceedance over Action Level.
Double underline denotes exceedance over Limit Level.



**Water Monitoring Result at P4 - SOC
Mid-Ebb Tide**

Date	Time	Weather Condition	Sampling Depth		Water Temperature			pH			Salinity		DO Saturation		DO		Turbidity		Suspended Solids					
					°C			-			ppt		%		mg/L		NTU		mg/L					
			m	Value	Average	Value	Average	Value	Average	Value	Average	Value	Average	Value	Average	Value	Average	Value	Average	Value	Average			
28/2/2015	21:59	Cloudy	Middle	2.5	19.00	19.00	19.05	8.01	8.01	8.01	32.78	32.78	32.78	83.1	82.8	83.0	6.34	6.31	6.32	3.27	3.25	3.18	4	5.00
	22:00		Middle	2.5	19.10	19.10		8.01	8.01		32.78	32.78		83.3	82.6		6.35	6.29		3.06	3.15		6	
2/3/2015	0:28	Cloudy	Middle	2.0	20.60	20.60	20.55	8.02	8.02	8.02	26.30	26.30	26.32	87.0	88.0	87.6	6.59	6.68	6.64	2.59	2.61	2.60	2	2.50
	0:29		Middle	2.0	20.50	20.50		8.02	8.02		26.33	26.33		87.7	87.6		6.65	6.64		2.63	2.57		3	
5/3/2015	11:39	Cloudy	Middle	3.0	17.70	17.70	17.70	8.31	8.31	8.31	32.58	32.58	32.58	77.7	77.2	76.8	6.09	6.05	6.02	4.57	4.56	4.62	3	2.50
	11:41		Middle	3.0	17.70	17.70		8.31	8.31		32.58	32.58		76.4	76.0		5.98	5.95		4.68	4.68		2	
7/3/2015	11:40	Cloudy	Middle	3.0	18.20	18.20	18.15	8.26	8.26	8.26	32.59	32.59	32.60	83.4	84.2	83.8	6.48	6.54	6.51	5.25	5.22	5.16	4	3.50
	11:42		Middle	3.0	18.10	18.10		8.26	8.26		32.61	32.61		83.9	83.6		6.52	6.49		5.08	5.07		3	
9/3/2015	14:35	Fine	Middle	3.0	19.50	19.50	19.70	8.17	8.17	8.17	32.53	32.53	32.53	82.4	82.3	82.1	6.20	6.19	6.18	4.45	4.34	4.35	6	6.00
	14:37		Middle	3.0	19.90	19.90		8.17	8.17		32.52	32.52		82.1	81.7		6.17	6.14		4.30	4.31		6	
11/3/2015	14:49	Cloudy	Middle	2.5	17.90	17.90	17.90	8.26	8.26	8.26	32.72	32.72	32.72	89.3	88.6	89.2	6.97	6.91	6.95	6.48	6.49	6.57	5	5.00
	14:51		Middle	2.5	17.90	17.90		8.26	8.26		32.71	32.71		89.0	89.9		6.96	6.94		6.63	6.67		5	
13/3/2015	15:26	Cloudy	Middle	2.5	17.80	17.80	17.85	8.19	8.19	8.19	32.59	32.59	32.59	83.7	84.2	84.3	6.56	6.58	6.59	5.22	5.10	5.13	3	3.00
	15:28		Middle	2.5	17.90	17.90		8.19	8.19		32.59	32.59		84.6	84.5		6.61	6.60		5.08	5.10		3	
16/3/2015	21:42	Cloudy	Middle	2.0	20.20	20.20	20.20	7.93	7.93	7.94	32.62	32.62	32.71	82.8	83.2	83.0	6.17	6.20	6.19	4.76	4.70	4.66	8	8.00
	21:43		Middle	2.0	20.20	20.20		7.94	7.94		32.80	32.80		83.2	82.8		6.20	6.17		4.73	4.46		8	
18/3/2015	11:15	Cloudy	Middle	2.5	20.10	20.10	19.85	8.05	8.05	8.05	32.17	32.17	32.16	73.4	74.2	73.4	5.57	5.63	5.57	4.02	4.00	3.98	6	6.50
	11:17		Middle	2.5	19.60	19.60		8.05	8.05		32.14	32.14		73.3	72.8		5.56	5.52		3.96	3.94		7	
20/3/2015	13:43	Fine	Middle	2.0	21.20	21.20	21.35	8.09	8.09	8.09	32.00	32.00	32.00	73.0	72.8	72.1	5.36	5.34	5.29	5.94	5.96	5.91	6	7.00
	13:45		Middle	2.0	21.50	21.50		8.09	8.09		32.00	32.00		71.4	71.0		5.24	5.21		5.85	5.88		8	
23/3/2015	14:46	Cloudy	Middle	2.5	20.50	20.50	20.60	8.15	8.15	8.15	32.32	32.32	32.32	72.9	75.1	73.3	5.42	5.43	5.42	4.50	4.54	4.50	7	6.50
	14:47		Middle	2.5	20.70	20.70		8.15	8.15		32.32	32.32		72.5	72.6		5.40	5.41		4.55	4.40		6	
25/3/2015	15:40	Cloudy	Middle	3.0	19.60	19.60	19.60	8.25	8.25	8.25	32.85	32.85	32.85	71.6	71.4	71.2	5.40	5.39	5.38	4.08	4.02	4.03	5	5.50
	15:42		Middle	3.0	19.60	19.60		8.25	8.25		32.85	32.85		70.9	70.7		5.34	5.37		4.00	4.00		6	
27/3/2015	16:55	Fine	Middle	2.5	20.80	20.80	20.85	8.18	8.18	8.18	32.38	32.38	32.38	70.5	71.5	72.3	5.24	5.30	5.35	1.86	1.86	1.83	6	5.50
	16:57		Middle	2.5	20.90	20.90		8.18	8.18		32.38	32.38		73.3	73.9		5.41	5.46		1.81	1.80		5	

Remarks:
Single underline denotes exceedance over Action Level.
Double underline denotes exceedance over Limit Level.



**Water Monitoring Result at P5 - WCT / RT / IT
Mid-Ebb Tide**

Date	Time	Weather Condition	Sampling Depth		Water Temperature			pH			Salinity		DO Saturation		DO		Turbidity		Suspended Solids					
					°C			-			ppt		%		mg/L		NTU		mg/L					
					Value	Average		Value	Average		Value	Average	Value	Average	Value	Average	Value	Average	Value	Average				
28/2/2015	22:11	Cloudy	Middle	2.5	19.10	19.10	19.10	8.03	8.03	8.03	32.76	32.76	32.77	82.7	83.2	83.1	6.30	6.34	6.34	4.01	3.91	3.88	4	4.00
	22:12		Middle	2.5	19.10	19.10		8.03	8.03		32.78	32.78		83.5	83.1		6.37	6.34		3.84	3.75		4	
2/3/2015	0:35	Cloudy	Middle	2.0	19.60	19.60	19.60	8.01	8.01	8.01	26.22	26.22	26.24	85.2	85.7	85.9	6.57	6.59	6.62	2.33	2.31	2.23	<2	<2
	0:36		Middle	2.0	19.60	19.60		8.01	8.01		26.26	26.26		86.3	86.5		6.64	6.66		2.19	2.09		<2	
5/3/2015	11:36	Cloudy	Middle	3.0	17.80	17.80	17.85	8.31	8.31	8.31	32.57	32.57	32.57	78.7	79.1	79.0	6.15	6.18	6.16	5.06	5.06	5.07	3	3.00
	11:38		Middle	3.0	17.90	17.90		8.31	8.31		32.57	32.57		79.4	78.9		6.20	6.10		5.06	5.09		3	
7/3/2015	11:45	Cloudy	Middle	3.0	18.40	18.40	18.40	8.27	8.27	8.27	32.63	32.63	32.63	84.0	83.9	83.7	6.49	6.49	6.47	4.54	4.55	4.64	6	5.50
	11:47		Middle	3.0	18.40	18.40		8.27	8.27		32.63	32.63		83.6	83.2		6.47	6.44		4.67	4.81		5	
9/3/2015	14:40	Fine	Middle	3.0	20.30	20.30	20.30	8.17	8.17	8.17	32.51	32.51	32.51	81.9	82.1	81.9	6.14	6.16	6.14	6.32	6.22	6.24	6	6.00
	14:42		Middle	3.0	20.30	20.30		8.17	8.17		32.51	32.51		81.4	82.1		6.09	6.15		6.21	6.19		6	
11/3/2015	14:55	Cloudy	Middle	2.5	18.00	18.00	18.00	8.26	8.26	8.26	32.72	32.72	32.72	85.2	85.7	85.5	6.63	6.67	6.65	6.40	6.40	6.37	7	6.50
	14:57		Middle	2.5	18.00	18.00		8.26	8.26		32.72	32.72		85.7	85.5		6.67	6.64		6.38	6.30		6	
13/3/2015	15:21	Cloudy	Middle	2.5	18.10	18.10	18.10	8.22	8.22	8.22	32.58	32.58	32.58	81.0	81.8	82.0	6.37	6.35	6.39	7.19	7.18	7.19	5	5.50
	15:23		Middle	2.5	18.10	18.10		8.22	8.22		32.58	32.58		82.6	82.7		6.42	6.43		7.18	7.20		6	
16/3/2015	21:48	Cloudy	Middle	2.0	20.20	20.20	20.20	7.94	7.94	7.94	32.75	32.75	32.76	74.1	74.6	74.9	5.53	5.57	5.60	5.13	5.11	5.13	7	6.50
	21:49		Middle	2.0	20.20	20.20		7.94	7.94		32.76	32.76		75.6	75.4		5.64	5.64		5.09	5.18		6	
18/3/2015	11:11	Cloudy	Middle	2.5	19.30	19.30	19.45	8.02	8.02	8.04	32.20	32.20	32.12	69.2	67.4	67.9	5.27	5.11	5.16	3.59	3.63	3.60	4	4.00
	11:13		Middle	2.5	19.60	19.60		8.06	8.06		32.05	32.04		67.5	67.6		5.12	5.14		3.63	3.55		4	
20/3/2015	13:50	Fine	Middle	2.0	21.10	21.10	21.15	8.09	8.09	8.09	31.92	31.92	31.92	71.2	70.1	70.5	5.26	5.17	5.20	6.89	6.54	6.59	6	6.00
	13:52		Middle	2.0	21.20	21.20		8.09	8.09		31.92	31.92		69.4	71.3		5.11	5.26		6.47	6.46		6	
23/3/2015	14:53	Cloudy	Middle	2.5	20.50	20.50	20.55	8.15	8.15	8.15	32.31	32.31	32.31	70.1	70.3	70.5	5.22	5.23	5.25	4.27	4.27	4.28	6	6.00
	14:55		Middle	2.5	20.60	20.60		8.15	8.15		32.30	32.30		71.0	70.6		5.28	5.27		4.29	4.29		6	
25/3/2015	15:45	Cloudy	Middle	3.0	19.70	19.70	19.65	8.26	8.26	8.26	32.89	32.89	32.89	70.1	70.0	70.5	5.28	5.28	5.31	5.30	5.11	5.11	5	5.50
	15:47		Middle	3.0	19.60	19.60		8.26	8.26		32.89	32.89		71.1	70.8		5.35	5.32		5.00	5.03		6	
27/3/2015	17:05	Fine	Middle	2.5	20.90	20.90	20.85	8.19	8.19	8.19	32.49	32.49	32.49	71.2	72.1	71.8	5.21	5.34	5.30	1.84	1.82	1.82	6	5.50
	17:07		Middle	2.5	20.80	20.80		8.18	8.18		32.49	32.49		71.9	72.1		5.32	5.34		1.81	1.81		5	

Remarks:
Single underline denotes exceedance over Action Level.
Double underline denotes exceedance over Limit Level.



**Water Monitoring Result at RW21-P789 - Sun Hung Kai Centre
Mid-Ebb Tide**

Date	Time	Weather Condition	Sampling Depth		Water Temperature			pH			Salinity		DO Saturation		DO		Turbidity		Suspended Solids					
					°C			-			ppt		%		mg/L		NTU		mg/L					
			m	Value	Average	Value	Average	Value	Average	Value	Average	Value	Average	Value	Average	Value	Average	Value	Average	Value	Average			
28/2/2015	20:30	Cloudy	Middle	3.5	19.10	19.10	19.10	7.89	7.89	7.90	32.72	32.72	32.73	81.6	82.1	81.9	6.22	6.25	6.24	2.87	2.80	2.82	3	3.00
	20:31		Middle	3.5	19.10	19.10		7.90	7.90		32.74	32.73		82.0	81.7		6.25	6.23		2.77	2.82		3	
2/3/2015	1:47	Cloudy	Middle	3.0	18.40	18.40	18.45	7.87	7.87	7.87	30.05	30.05	30.06	77.5	77.5	77.8	6.06	6.06	6.08	2.19	2.16	2.15	4	4.00
	1:48		Middle	3.0	18.50	18.50		7.87	7.87		30.07	30.07		77.8	78.2		6.08	6.11		2.14	2.11		4	
5/3/2015	11:53	Cloudy	Middle	3.0	17.90	17.90	17.85	8.33	8.33	8.34	32.57	32.58	32.58	76.2	76.9	76.4	5.95	6.01	5.97	5.47	5.47	5.44	3	3.50
	11:55		Middle	3.0	17.80	17.80		8.35	8.35		32.58	32.58		76.6	76.0		5.98	5.94		5.44	5.38		4	
7/3/2015	14:40	Cloudy	Middle	3.0	18.50	18.50	18.55	8.26	8.26	8.26	32.65	32.65	32.64	78.3	77.0	77.5	6.03	5.94	5.97	4.94	4.88	4.81	4	5.00
	14:42		Middle	3.0	18.60	18.60		8.26	8.26		32.62	32.62		77.2	77.4		5.95	5.96		4.70	4.70		6	
9/3/2015	15:05	Fine	Middle	3.5	19.40	19.40	19.50	8.19	8.19	8.19	32.53	32.53	32.57	82.4	82.3	82.1	6.25	6.23	6.22	4.95	4.88	4.90	6	6.50
	15:07		Middle	3.5	19.60	19.60		8.19	8.19		32.60	32.60		82.1	81.5		6.22	6.17		4.87	4.88		7	
11/3/2015	15:25	Cloudy	Middle	3.5	18.20	18.20	18.15	8.27	8.27	8.27	32.73	32.73	32.73	85.2	85.8	85.3	6.61	6.66	6.62	6.15	6.15	6.23	6	5.50
	15:27		Middle	3.5	18.10	18.10		8.27	8.27		32.73	32.73		85.4	84.8		6.63	6.59		6.27	6.35		5	
13/3/2015	15:45	Cloudy	Middle	3.5	18.30	18.30	18.30	8.23	8.23	8.23	32.67	32.67	32.67	80.9	80.6	80.6	6.27	6.24	6.25	5.61	5.73	5.68	6	5.00
	15:47		Middle	3.5	18.30	18.30		8.23	8.23		32.67	32.67		80.9	80.1		6.27	6.20		5.68	5.71		4	
16/3/2015	20:15	Cloudy	Middle	2.5	19.30	19.30	19.35	7.63	7.63	7.63	32.94	32.79	32.81	74.4	76.4	76.2	5.53	5.79	5.72	4.75	4.55	4.51	6	7.00
	20:16		Middle	2.5	19.40	19.40		7.63	7.63		32.75	32.75		78.0	76.0		5.82	5.73		4.35	4.39		8	
18/3/2015	9:05	Cloudy	Middle	3.5	19.90	19.90	19.90	8.05	8.05	8.06	32.36	32.36	32.36	79.6	80.5	80.1	5.99	6.05	6.02	7.14	7.34	7.32	10	10.00
	9:07		Middle	3.5	19.90	19.90		8.06	8.06		32.36	32.36		80.1	80.3		6.02	6.03		7.42	7.38		10	
20/3/2015	14:10	Fine	Middle	3.0	20.80	20.80	20.90	8.09	8.09	8.09	32.10	32.10	32.10	69.7	70.5	70.4	5.16	5.21	5.20	5.21	5.22	5.19	5	6.00
	14:12		Middle	3.0	21.00	21.00		8.09	8.09		32.09	32.09		70.7	70.6		5.23	5.21		5.22	5.12		7	
23/3/2015	15:15	Cloudy	Middle	3.5	20.70	20.70	20.80	8.18	8.18	8.18	32.58	32.58	32.58	71.4	71.9	71.7	5.28	5.31	5.29	5.38	5.25	5.28	8	8.00
	15:17		Middle	3.5	20.90	20.90		8.18	8.18		32.58	32.58		71.5	72.0		5.25	5.32		5.27	5.23		8	
25/3/2015	16:10	Cloudy	Middle	3.5	19.80	19.80	19.80	8.27	8.27	8.27	32.92	32.92	32.92	73.8	73.1	73.6	5.56	5.50	5.54	6.01	5.99	5.96	6	6.00
	16:12		Middle	3.5	19.80	19.80		8.27	8.27		32.92	32.92		73.8	73.5		5.55	5.53		5.93	5.91		6	
27/3/2015	17:20	Fine	Middle	3.5	20.40	20.40	20.50	8.18	8.18	8.19	32.79	32.79	32.77	62.7	62.2	62.7	4.65	4.62	4.66	3.60	3.62	3.62	9	9.00
	17:22		Middle	3.5	20.60	20.60		8.19	8.19		32.75	32.75		63.2	62.8		4.69	4.66		3.63	3.63		9	

Remarks:
Single underline denotes exceedance over Action Level.
Double underline denotes exceedance over Limit Level.



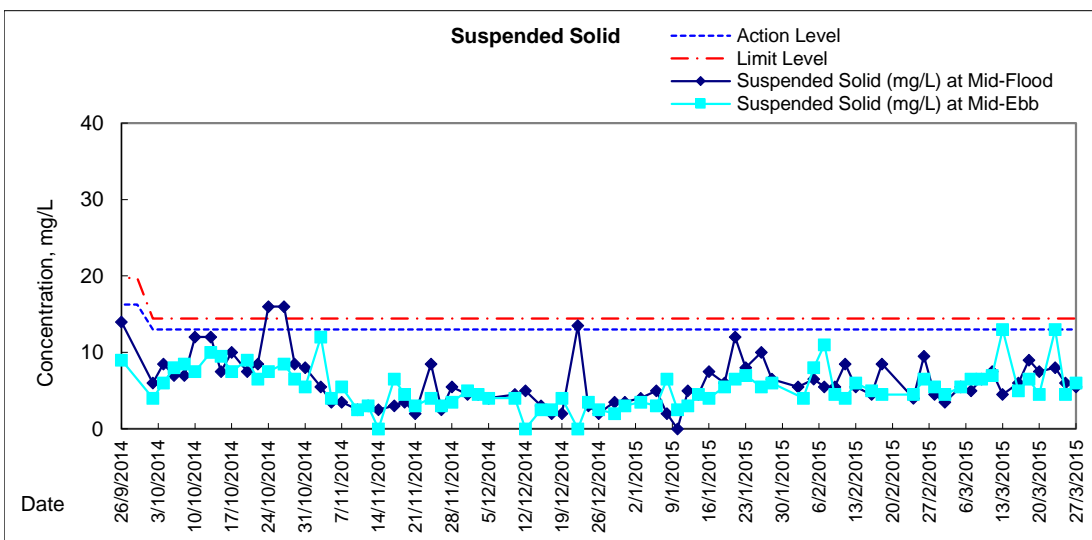
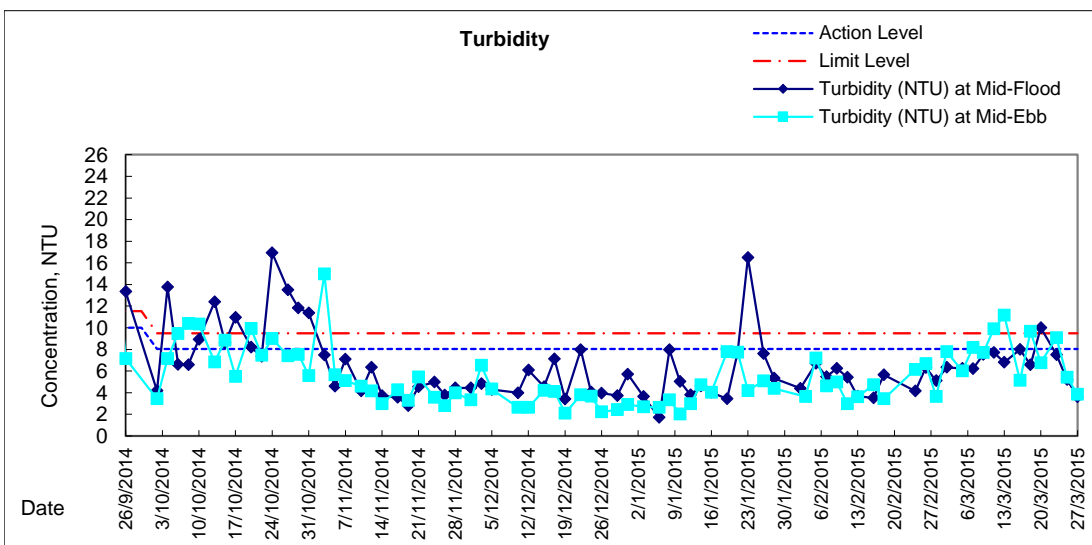
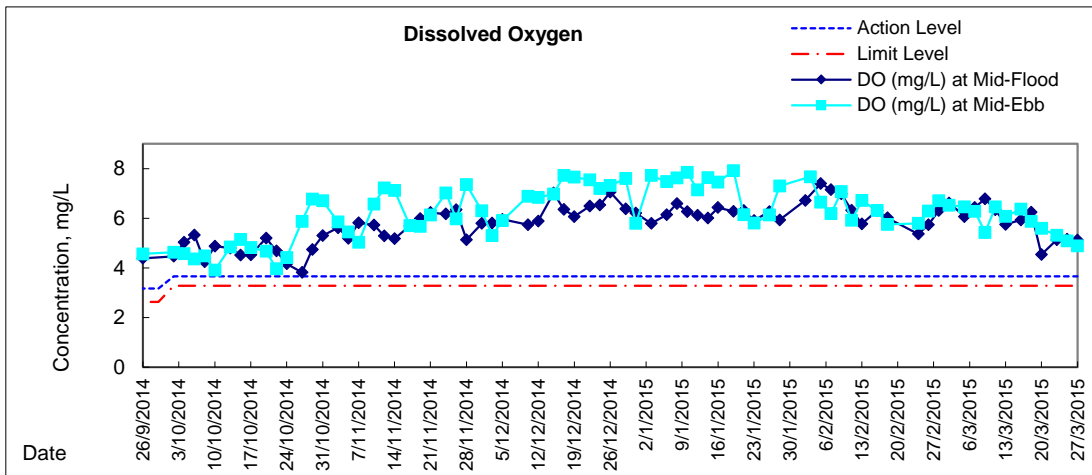
**Water Monitoring Result at WSD19 - Sheung Wan
Mid-Ebb Tide**

Date	Time	Weather Condition	Sampling Depth		Water Temperature			pH			Salinity		DO Saturation		DO		Turbidity		Suspended Solids					
					°C			-			ppt		%		mg/L		NTU		mg/L					
			m	Value	Average	Value	Average	Value	Average	Value	Average	Value	Average	Value	Average	Value	Average	Value	Average	Value	Average			
28/2/2015	19:30	Cloudy	Middle	3.0	19.60	19.60	19.60	7.51	7.51	7.53	32.43	32.43	32.46	89.4	89.5	88.9	6.76	6.76	6.71	3.57	3.55	3.64	5	5.50
	19:31		Middle	3.0	19.60	19.60		7.54	7.54		32.49	32.48		88.5	88.0		6.68	6.64		3.62	3.80		6	
2/3/2015	22:25	Cloudy	Middle	2.5	18.70	18.70	18.70	7.92	7.92	7.92	27.67	27.62	27.65	84.8	85.1	85.7	6.46	6.49	6.53	7.85	7.88	7.78	5	4.50
	22:26		Middle	2.5	18.70	18.70		7.92	7.92		27.69	27.61		86.4	86.5		6.57	6.58		7.74	7.65		4	
5/3/2015	10:30	Cloudy	Middle	3.0	17.80	17.80	17.75	8.25	8.25	8.26	32.70	32.70	32.71	82.9	83.9	82.6	6.48	6.56	6.46	6.01	6.00	6.00	6	5.50
	10:32		Middle	3.0	17.70	17.70		8.26	8.26		32.71	32.71		83.4	80.2		6.54	6.27		6.00	6.00		5	
7/3/2015	11:00	Cloudy	Middle	3.5	18.30	18.30	18.30	8.24	8.24	8.24	32.65	32.65	32.65	81.0	81.1	81.2	6.27	6.28	6.28	8.22	8.16	<u>8.17</u>	6	6.50
	11:02		Middle	3.5	18.30	18.30		8.24	8.24		32.65	32.65		81.4	81.1		6.30	6.28		8.15	8.15		7	
9/3/2015	13:53	Fine	Middle	3.5	20.90	20.90	21.15	8.10	8.10	8.10	32.42	32.42	32.40	76.1	74.3	73.9	5.59	5.46	5.43	7.60	7.70	7.72	7	6.50
	13:55		Middle	3.5	21.40	21.40		8.10	8.10		32.38	32.38		73.1	71.9		5.37	5.28		7.73	7.83		6	
11/3/2015	14:10	Cloudy	Middle	3.0	18.60	18.60	18.60	8.23	8.23	8.24	32.67	32.67	32.68	83.3	82.5	83.4	6.44	6.38	6.45	9.94	9.95	<u>9.99</u>	6	7.00
	14:12		Middle	3.0	18.60	18.60		8.24	8.24		32.68	32.68		83.9	84.0		6.49	6.50		9.94	9.72		8	
13/3/2015	14:32	Cloudy	Middle	3.5	18.40	18.40	18.45	8.17	8.17	8.17	32.53	32.53	32.54	79.2	79.7	78.8	6.12	6.15	6.08	11.14	11.15	<u>11.15</u>	14	13.00
	14:34		Middle	3.5	18.50	18.50		8.17	8.17		32.54	32.54		79.0	77.1		6.10	5.95		11.15	11.15		12	
16/3/2015	18:45	Cloudy	Middle	3.0	20.30	20.30	20.35	7.59	7.59	7.60	32.59	32.59	32.57	86.3	86.7	86.0	6.41	6.43	6.37	5.29	5.02	5.13	4	5.00
	18:46		Middle	3.0	20.40	20.40		7.60	7.60		32.55	32.55		86.0	85.0		6.33	6.31		5.15	5.05		6	
18/3/2015	11:00	Cloudy	Middle	3.5	20.60	20.60	20.70	8.08	8.08	8.08	32.25	32.25	32.25	78.3	79.8	79.2	5.81	5.92	5.87	9.86	9.66	<u>9.66</u>	7	6.50
	11:02		Middle	3.5	20.80	20.80		8.08	8.08		32.24	32.24		78.7	79.9		5.83	5.92		9.58	9.54		6	
20/3/2015	10:20	Fine	Middle	3.5	21.50	21.50	21.70	8.09	8.09	8.09	32.19	32.19	32.19	77.1	77.5	76.9	5.60	5.63	5.59	6.83	6.78	6.77	5	4.50
	10:22		Middle	3.5	21.90	21.90		8.09	8.09		32.19	32.19		77.1	76.0		5.60	5.52		6.74	6.71		4	
23/3/2015	13:55	Cloudy	Middle	3.5	21.20	21.20	21.45	8.14	8.14	8.14	32.36	32.36	32.34	72.5	72.3	72.5	5.29	5.29	5.31	9.03	9.04	<u>9.08</u>	13	13.00
	13:57		Middle	3.5	21.70	21.70		8.14	8.14		32.32	32.32		72.2	72.9		5.31	5.36		9.11	9.12		13	
25/3/2015	14:58	Cloudy	Middle	3.5	19.90	19.90	19.90	8.18	8.18	8.18	32.74	32.74	32.75	67.0	68.8	67.8	5.03	5.17	5.09	5.37	5.40	5.42	4	4.50
	15:00		Middle	3.5	19.90	19.90		8.18	8.18		32.75	32.75		67.3	67.9		5.05	5.10		5.45	5.46		5	
27/3/2015	16:00	Fine	Middle	3.5	21.00	21.00	21.20	8.15	8.15	8.15	32.55	32.55	32.54	66.9	67.4	66.5	4.92	4.94	4.89	3.87	3.87	3.85	6	6.00
	16:02		Middle	3.5	21.40	21.40		8.15	8.15		32.53	32.53		66.6	65.2		4.90	4.79		3.86	3.80		6	

Remarks:
Single underline denotes exceedance over Action Level.
Double underline denotes exceedance over Limit Level.

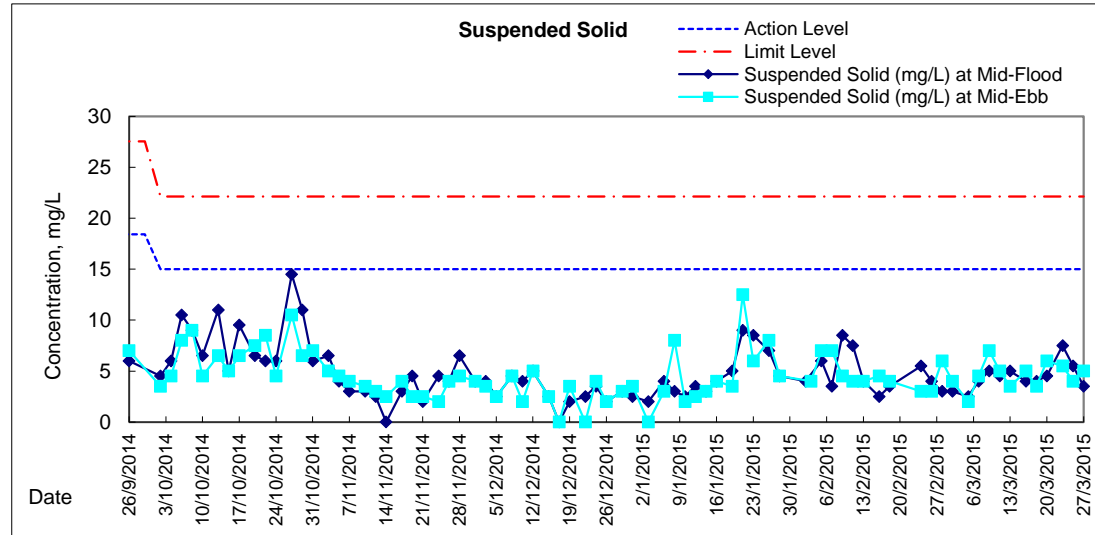
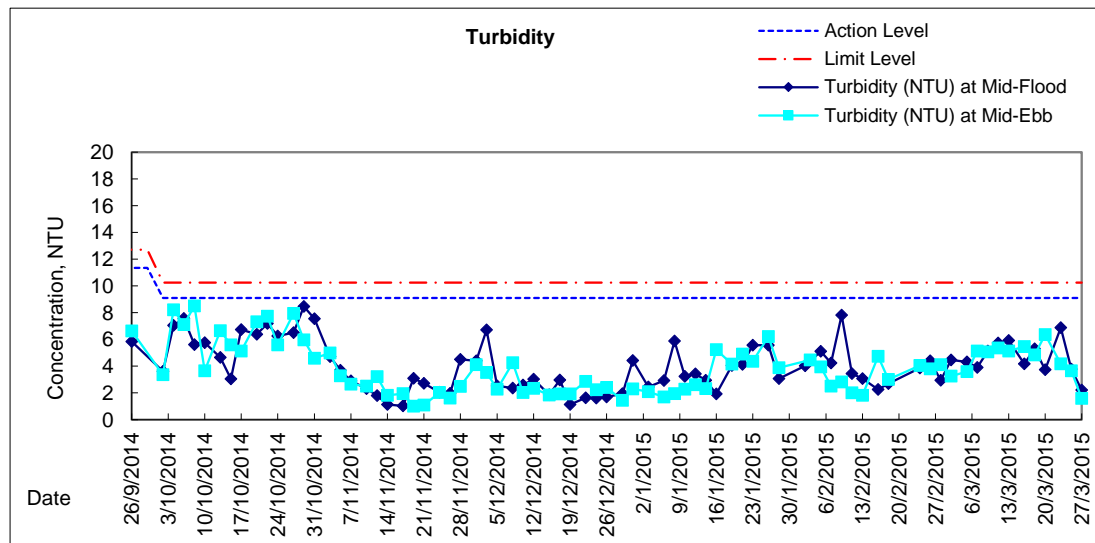
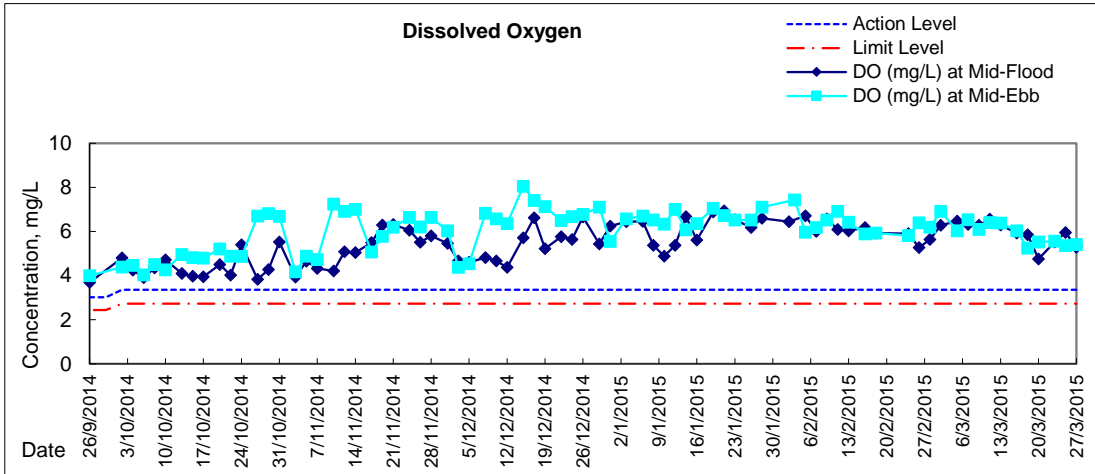


Graphic Presentation of Water Quality Result of WSD19 - Sheung Wan



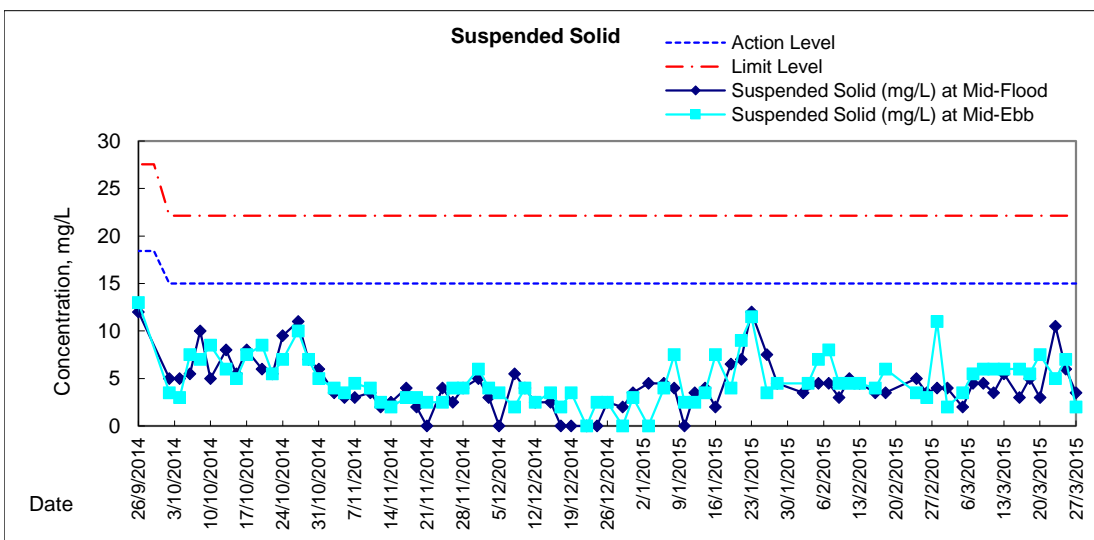
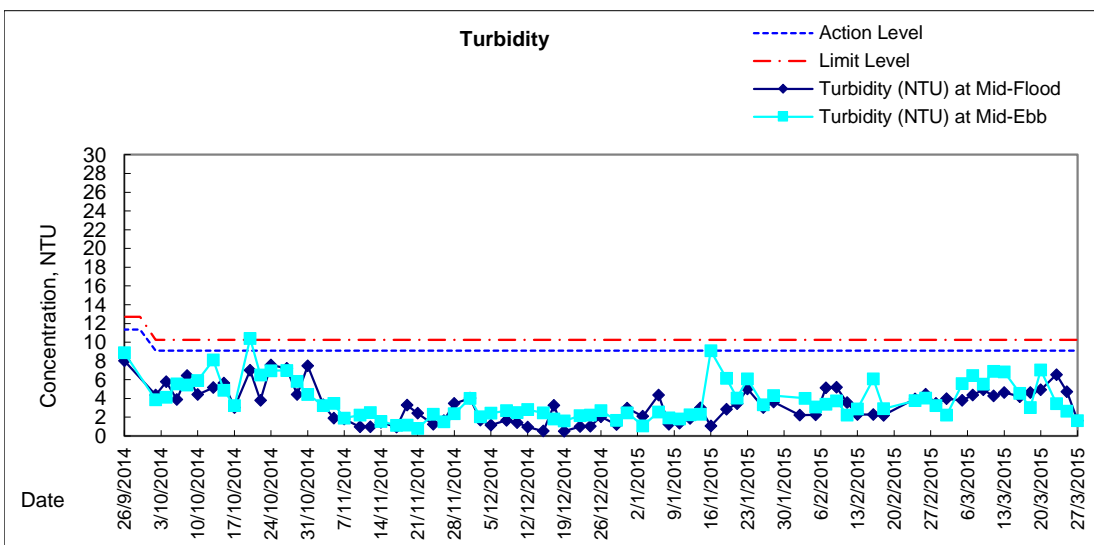
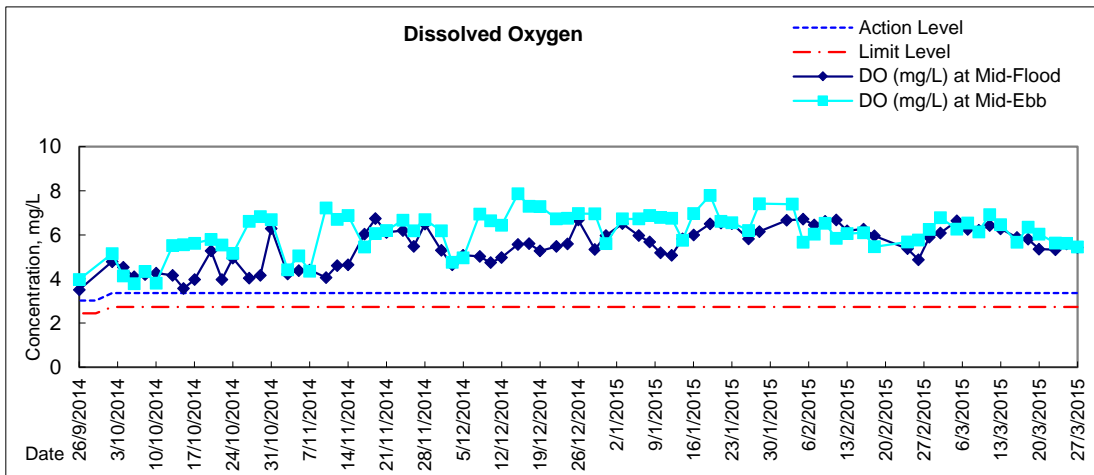


Graphic Presentation of Water Quality Result of C1 - HKCEC



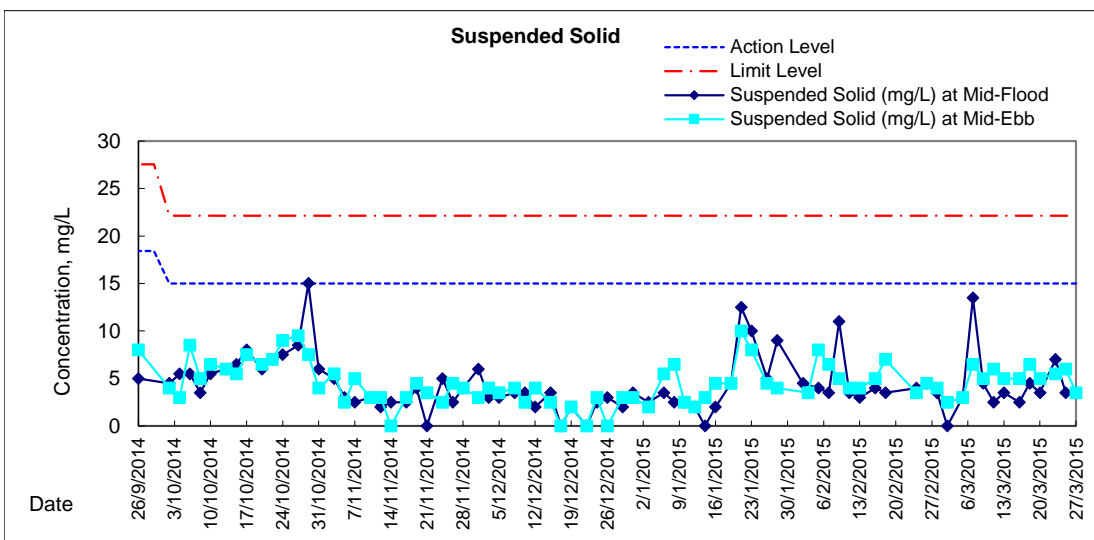
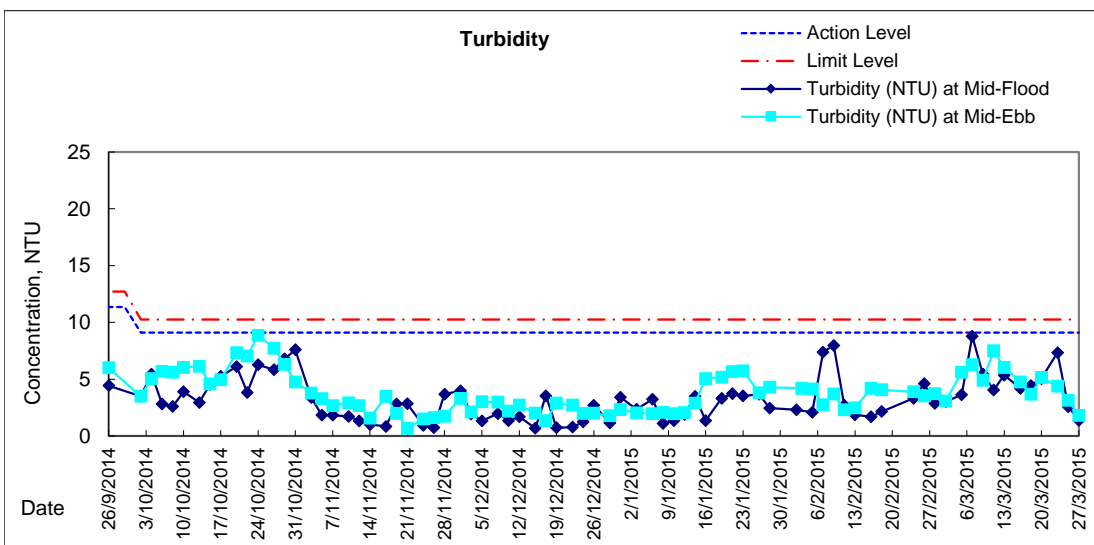
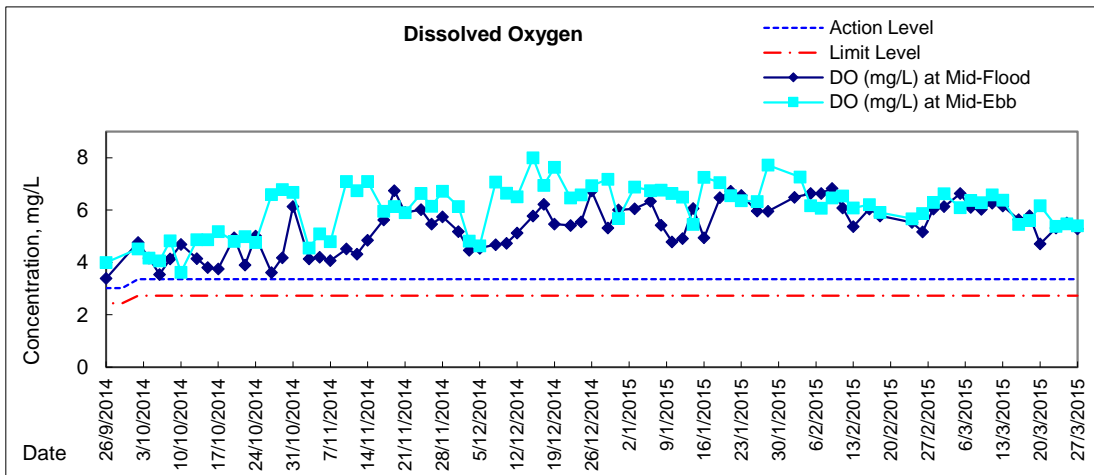


Graphic Presentation of Water Quality Result of P1 - HKCEC Phase I



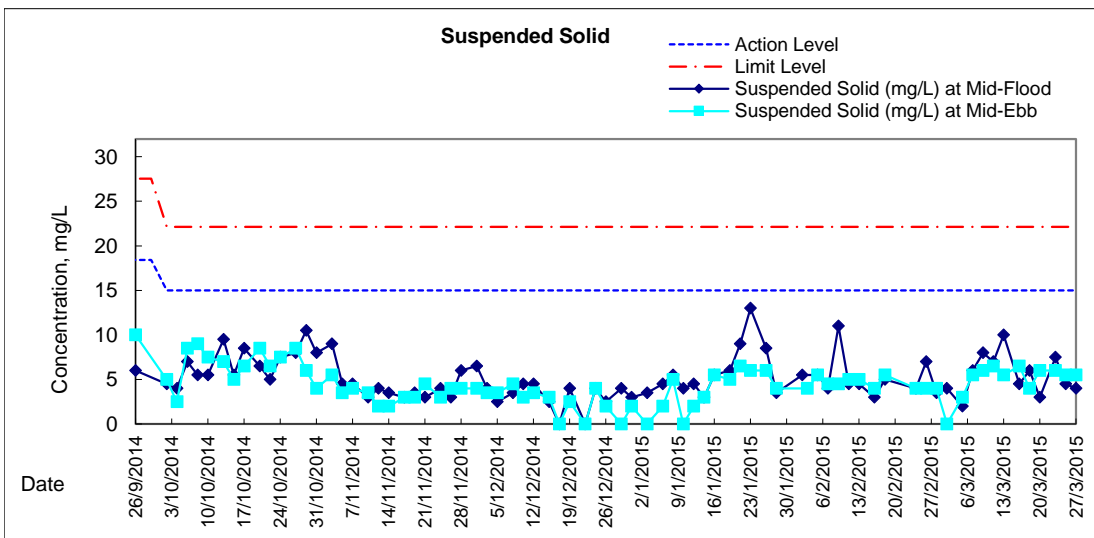
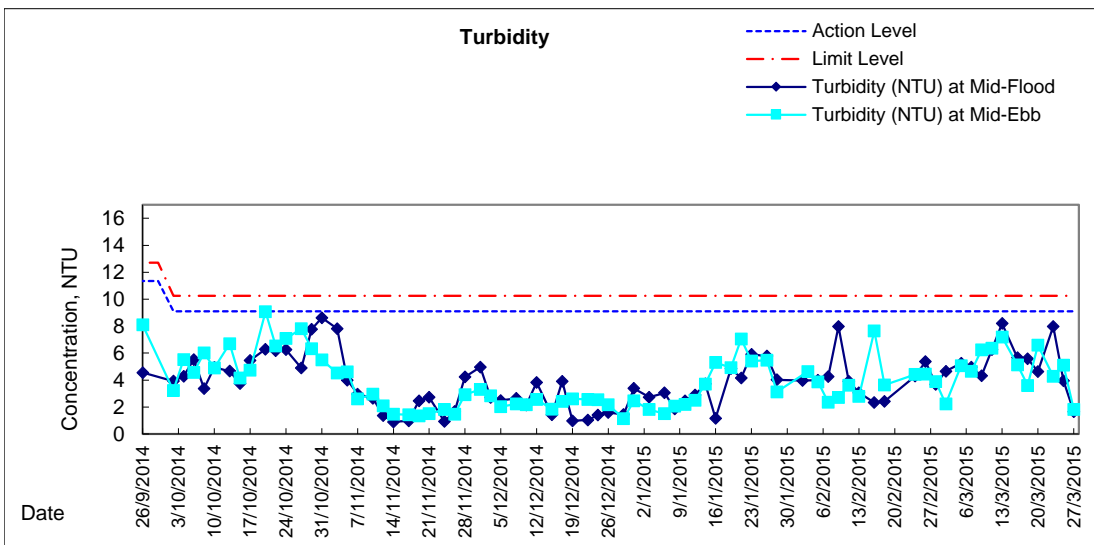
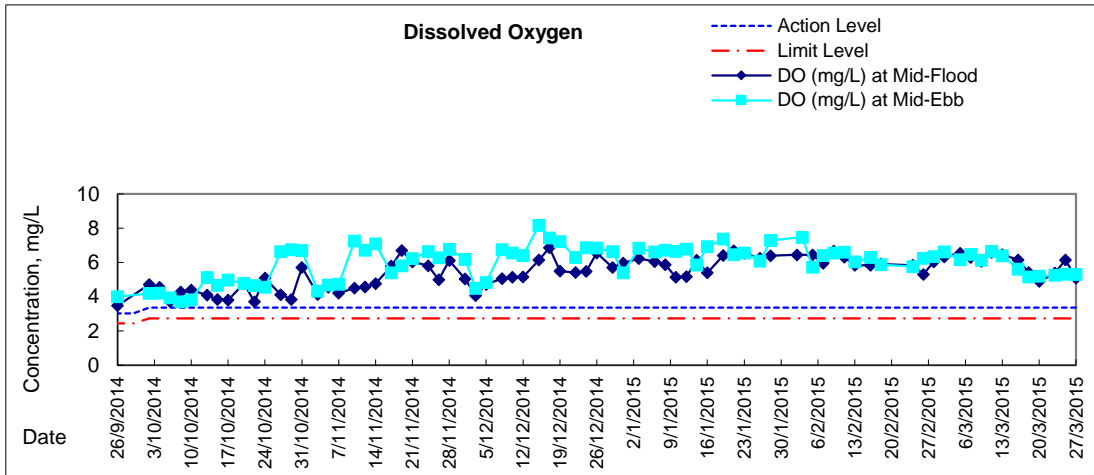


Graphic Presentation of Water Quality Result of P3 - APA



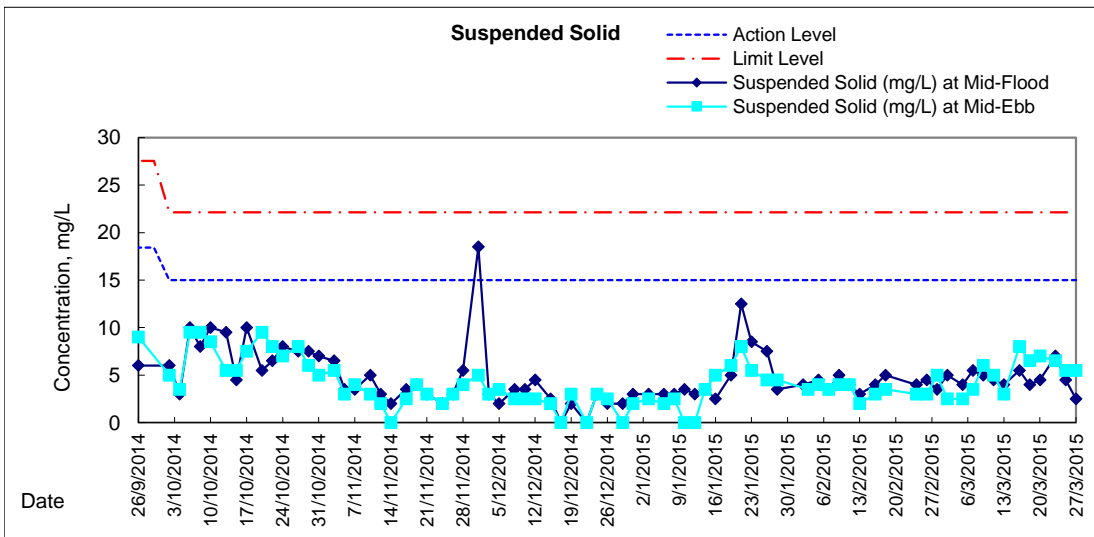
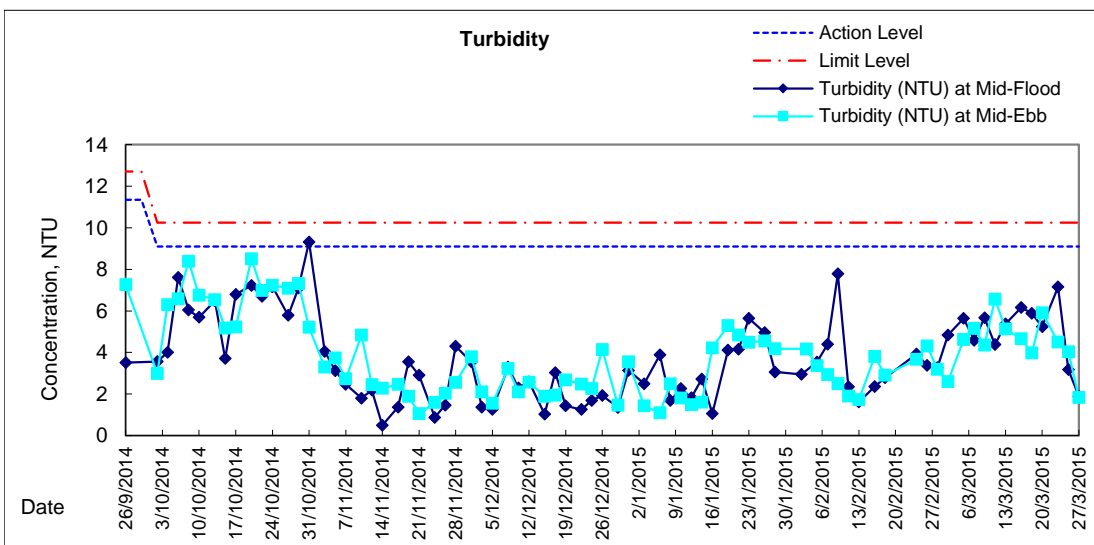
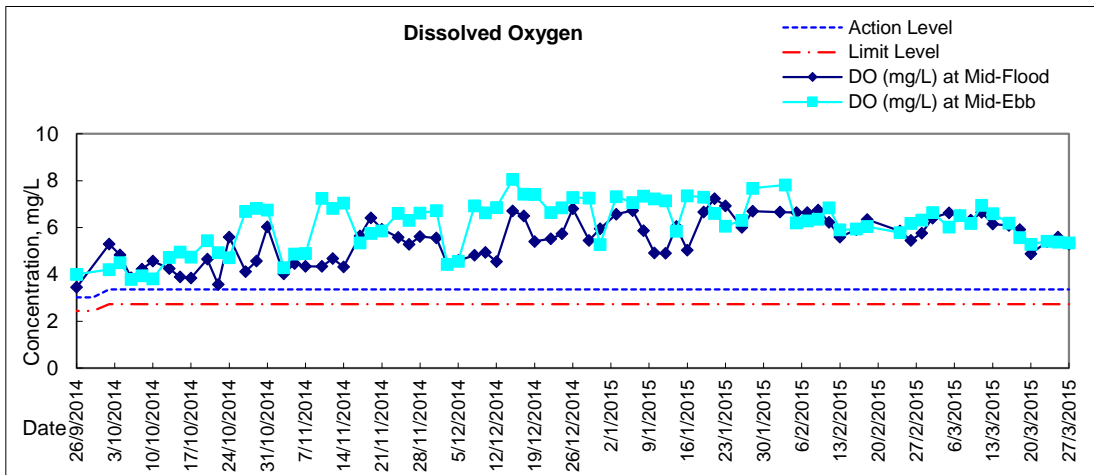


Graphic Presentation of Water Quality Result of P5 - WCT / RT / IT



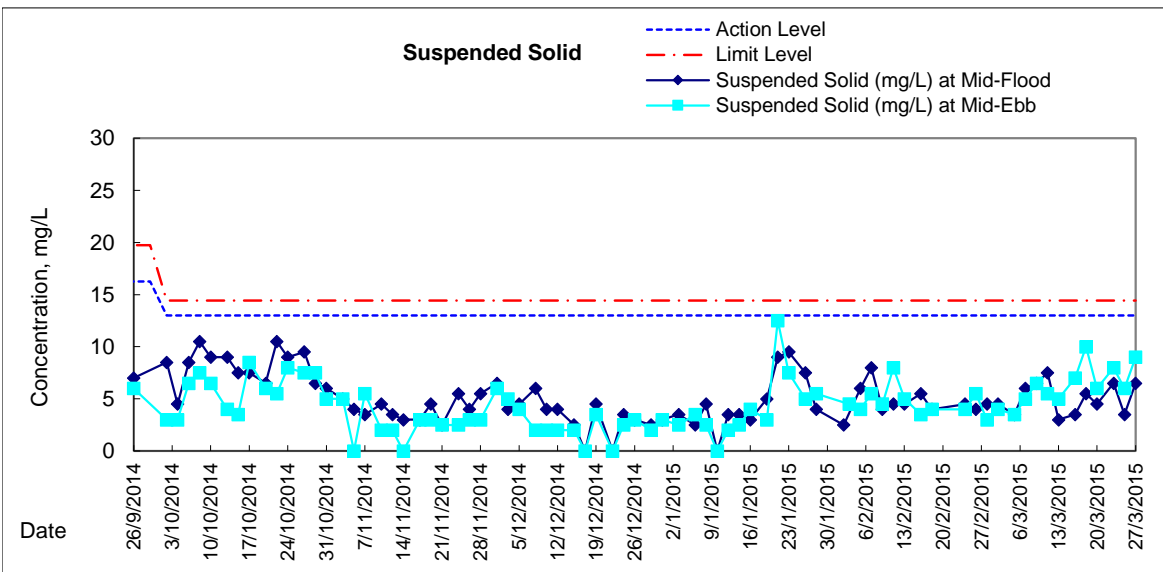
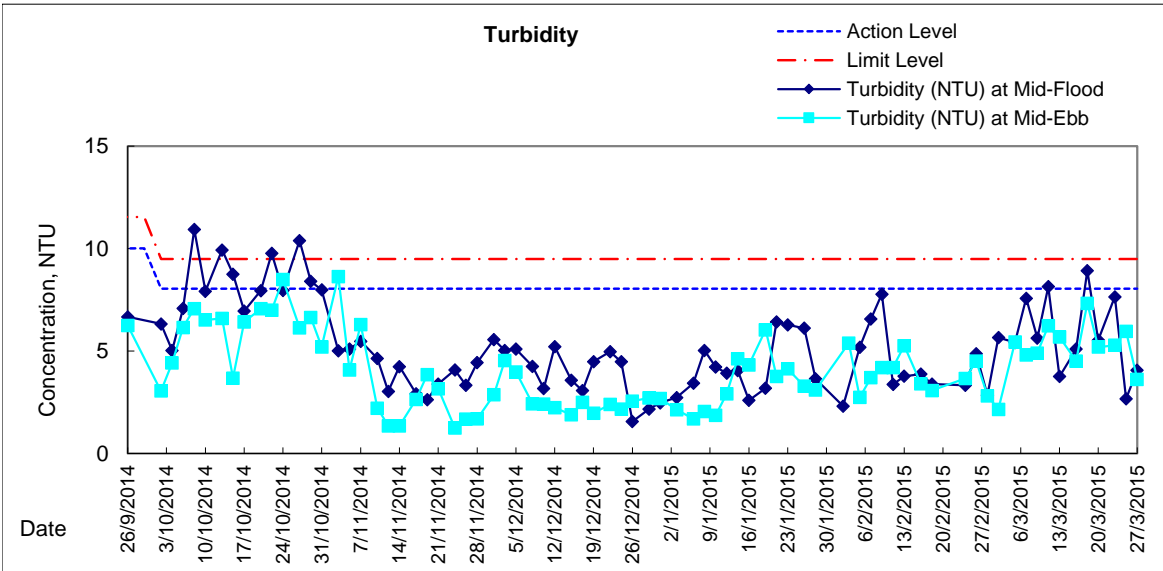
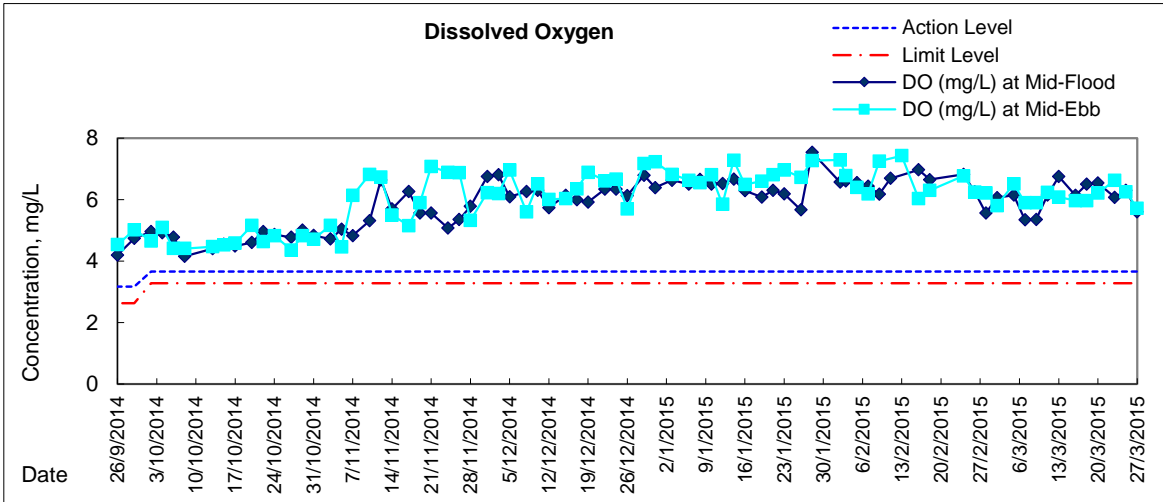


Graphic Presentation of Water Quality Result of P4 - SOC



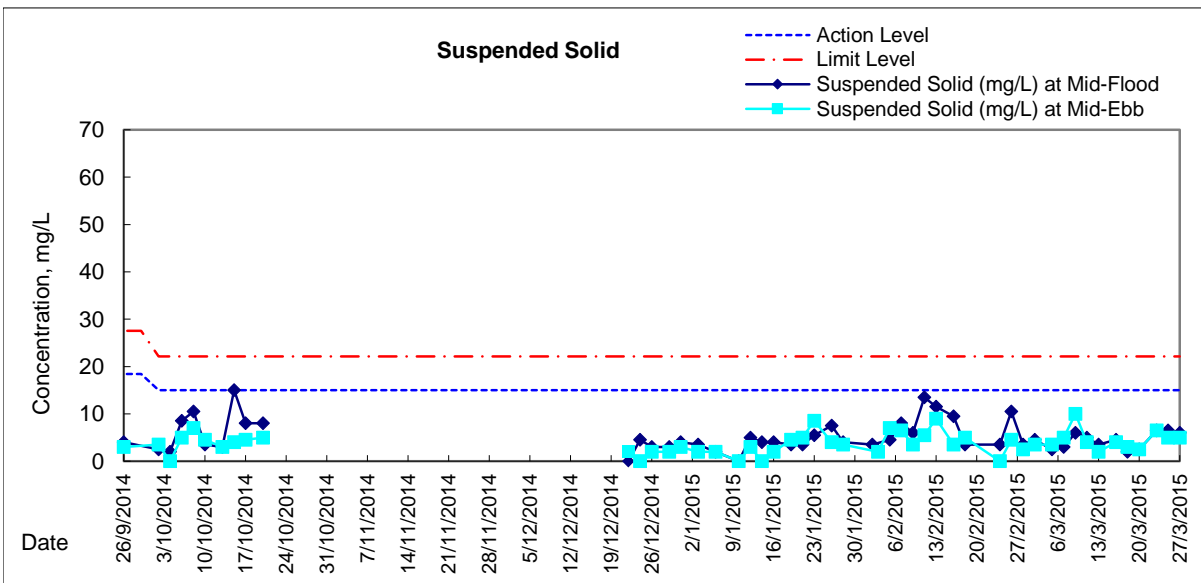
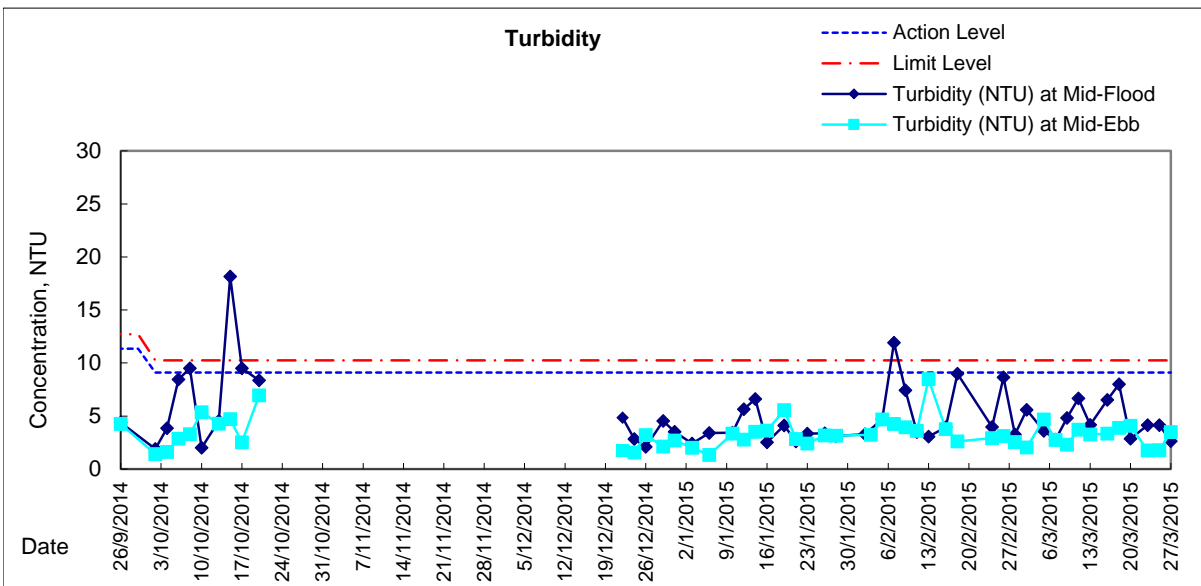
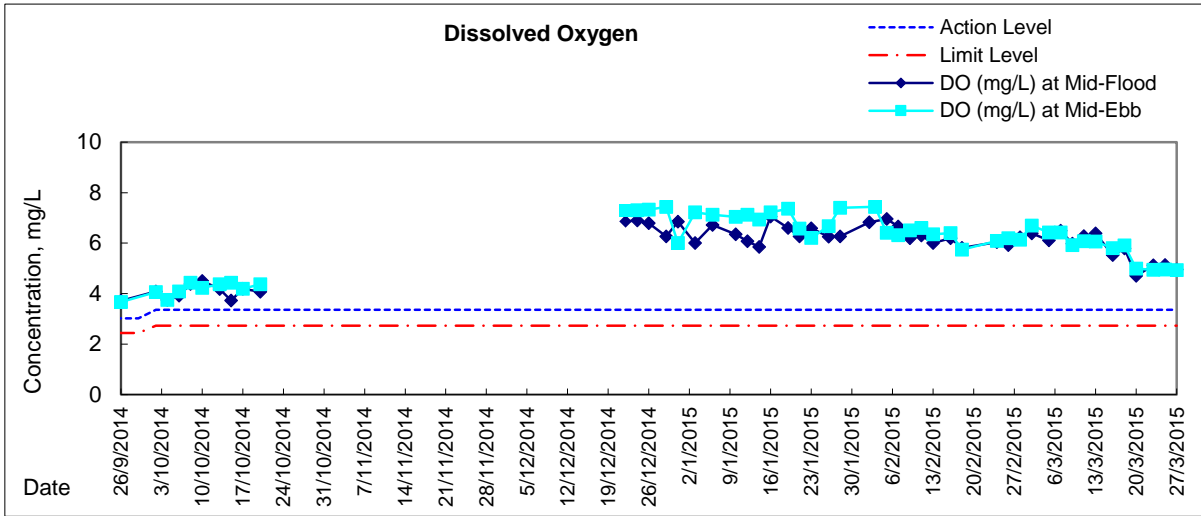


Graphic Presentation of Water Quality Result of RW21-P789 - GEC/CRC/SHK





Graphic Presentation of Water Quality Result of C7 - Windsor House





**Water Monitoring Result at C6 - Excelsior Hotel
Mid-Flood Tide**

Date	Time	Weather Condition	Sampling Depth m	Water Temperature °C			pH			Salinity ppt			DO Saturation %			DO mg/L				
				Value	Average		Value	Average		Value	Average		Value	Average		Value	Average			
28/2/2015	-	Cloudy	Surface	-	-	-	-	-	-	-	-	-	-	-	-	-	-	-	-	
	11:15		Middle	1.5	18.40	18.40	18.4	8.29	8.29	8.3	31.68	31.68	31.7	82.8	82.3	82.6	6.43	6.39	6.41	
	-		Bottom	-	-	-	-	-	-	-	-	-	-	-	-	-	-	-	-	-
2/3/2015	-	Cloudy	Surface	-	-	-	-	-	-	-	-	-	-	-	-	-	-	-	-	-
	15:00		Middle	1.5	18.30	18.30	18.3	8.28	8.28	8.3	31.72	31.72	31.7	81.4	80.5	81.0	6.34	6.27	6.31	
	-		Bottom	-	-	-	-	-	-	-	-	-	-	-	-	-	-	-	-	-
5/3/2015	-	Cloudy	Surface	-	-	-	-	-	-	-	-	-	-	-	-	-	-	-	-	-
	18:35		Middle	1.5	18.30	18.30	18.3	8.46	8.46	8.5	32.12	32.12	32.1	79.4	78.8	79.1	6.18	6.13	6.16	
	-		Bottom	-	-	-	-	-	-	-	-	-	-	-	-	-	-	-	-	-
7/3/2015	-	Cloudy	Surface	-	-	-	-	-	-	-	-	-	-	-	-	-	-	-	-	-
	19:04		Middle	1.5	18.30	18.30	18.3	7.94	7.94	7.9	31.99	32.03	32.0	82.9	84.2	83.6	6.42	6.52	6.47	
	-		Bottom	-	-	-	-	-	-	-	-	-	-	-	-	-	-	-	-	-
9/3/2015	-	Fine	Surface	-	-	-	-	-	-	-	-	-	-	-	-	-	-	-	-	-
	7:45		Middle	1.5	18.50	18.50	18.5	8.34	8.34	8.3	32.08	32.08	32.1	81.7	81.0	81.4	6.32	6.27	6.30	
	-		Bottom	-	-	-	-	-	-	-	-	-	-	-	-	-	-	-	-	-
11/3/2015	-	Cloudy	Surface	-	-	-	-	-	-	-	-	-	-	-	-	-	-	-	-	-
	10:00		Middle	1.5	18.40	18.40	18.4	8.29	8.29	8.3	32.18	32.18	32.2	80.2	80.7	80.5	6.22	6.26	6.24	
	-		Bottom	-	-	-	-	-	-	-	-	-	-	-	-	-	-	-	-	-
13/3/2015	-	Cloudy	Surface	-	-	-	-	-	-	-	-	-	-	-	-	-	-	-	-	-
	7:35		Middle	1.5	17.90	17.90	17.9	8.20	8.20	8.2	32.71	32.71	32.7	80.5	80.6	80.6	6.29	6.30	6.30	
	-		Bottom	-	-	-	-	-	-	-	-	-	-	-	-	-	-	-	-	-
16/3/2015	-	Cloudy	Surface	-	-	-	-	-	-	-	-	-	-	-	-	-	-	-	-	-
	14:40		Middle	1.5	20.40	20.40	20.4	8.13	8.13	8.1	31.73	31.73	31.7	73.5	72.2	72.9	5.49	5.39	5.44	
	-		Bottom	-	-	-	-	-	-	-	-	-	-	-	-	-	-	-	-	-
18/3/2015	-	Cloudy	Surface	-	-	-	-	-	-	-	-	-	-	-	-	-	-	-	-	-
	16:35		Middle	1.5	20.60	20.60	20.6	8.11	8.11	8.1	31.29	31.29	31.3	76.0	75.6	75.8	5.67	5.64	5.66	
	-		Bottom	-	-	-	-	-	-	-	-	-	-	-	-	-	-	-	-	-
20/3/2015	-	Fine	Surface	-	-	-	-	-	-	-	-	-	-	-	-	-	-	-	-	-
	17:34		Middle	1.5	21.30	21.30	21.3	8.15	8.15	8.2	30.80	30.80	30.8	63.6	63.1	63.4	4.20	4.16	4.18	
	-		Bottom	-	-	-	-	-	-	-	-	-	-	-	-	-	-	-	-	-
23/3/2015	-	Fine	Surface	-	-	-	-	-	-	-	-	-	-	-	-	-	-	-	-	-
	7:40		Middle	1.5	19.70	19.70	19.7	8.15	8.15	8.2	31.82	31.82	31.8	67.1	67.4	67.3	5.09	5.11	5.10	
	-		Bottom	-	-	-	-	-	-	-	-	-	-	-	-	-	-	-	-	-
25/3/2015	-	Fine	Surface	-	-	-	-	-	-	-	-	-	-	-	-	-	-	-	-	-
	7:55		Middle	1.5	19.90	19.90	19.9	8.21	8.21	8.2	31.26	31.26	31.3	67.3	67.9	67.6	5.11	5.16	5.14	
	-		Bottom	-	-	-	-	-	-	-	-	-	-	-	-	-	-	-	-	-
27/3/2015	-	Cloudy	Surface	-	-	-	-	-	-	-	-	-	-	-	-	-	-	-	-	-
	11:07		Middle	1.5	20.40	20.40	20.4	8.19	8.19	8.2	31.73	31.73	31.7	70.0	70.0	70.0	5.23	5.24	5.24	
	-		Bottom	-	-	-	-	-	-	-	-	-	-	-	-	-	-	-	-	-

Remarks:
 Single underline denotes exceedance over Action Level.
 Double underline denotes exceedance over Limit Level.



**Water Monitoring Result at Ex-WPCWA SW - South-western corners of ex-Public Cargo Works Area
Mid-Flood Tide**

Date	Time	Weather Condition	Sampling Depth m		Water Temperature °C			pH			Salinity ppt			DO Saturation %			DO mg/L		
					Value		Average	Value		Average	Value		Average	Value		Average	Value		Average
28/2/2015	11:40	Cloudy	Surface	1.0	18.20	18.20	18.2	8.23	8.23	8.2	31.56	31.56	31.6	76.5	76.2	76.4	5.95	5.94	5.95
	-		Middle	-	-	-	-	-	-	-	-	-	-	-	-	-	-	-	-
	11:42		Bottom	4.0	18.10	18.10	18.1	8.26	8.26	8.3	31.97	31.97	32.0	78.7	78.3	78.5	6.14	6.11	6.13
2/3/2015	15:30	Cloudy	Surface	1.0	18.80	18.80	18.8	8.20	8.20	8.2	29.70	29.71	29.7	69.7	70.3	70.0	5.44	5.49	5.47
	-		Middle	-	-	-	-	-	-	-	-	-	-	-	-	-	-	-	-
	15:32		Bottom	4.0	18.30	18.30	18.3	8.32	8.32	8.3	31.46	31.46	31.5	76.1	76.0	76.1	5.92	5.92	5.92
5/3/2015	-	Cloudy	Surface	-	-	-	-	-	-	-	-	-	-	-	-	-	-	-	-
	-		Middle	-	-	-	-	-	-	-	-	-	-	-	-	-	-	-	-
	-		Bottom	-	-	-	-	-	-	-	-	-	-	-	-	-	-	-	-
7/3/2015	-	Cloudy	Surface	-	-	-	-	-	-	-	-	-	-	-	-	-	-	-	-
	-		Middle	-	-	-	-	-	-	-	-	-	-	-	-	-	-	-	-
	-		Bottom	-	-	-	-	-	-	-	-	-	-	-	-	-	-	-	-
9/3/2015	-	Fine	Surface	-	-	-	-	-	-	-	-	-	-	-	-	-	-	-	-
	-		Middle	-	-	-	-	-	-	-	-	-	-	-	-	-	-	-	-
	-		Bottom	-	-	-	-	-	-	-	-	-	-	-	-	-	-	-	-
11/3/2015	-	Cloudy	Surface	-	-	-	-	-	-	-	-	-	-	-	-	-	-	-	-
	-		Middle	-	-	-	-	-	-	-	-	-	-	-	-	-	-	-	-
	-		Bottom	-	-	-	-	-	-	-	-	-	-	-	-	-	-	-	-
13/3/2015	-	Cloudy	Surface	-	-	-	-	-	-	-	-	-	-	-	-	-	-	-	-
	-		Middle	-	-	-	-	-	-	-	-	-	-	-	-	-	-	-	-
	-		Bottom	-	-	-	-	-	-	-	-	-	-	-	-	-	-	-	-
16/3/2015	-	Cloudy	Surface	-	-	-	-	-	-	-	-	-	-	-	-	-	-	-	-
	-		Middle	-	-	-	-	-	-	-	-	-	-	-	-	-	-	-	-
	-		Bottom	-	-	-	-	-	-	-	-	-	-	-	-	-	-	-	-
18/3/2015	-	Cloudy	Surface	-	-	-	-	-	-	-	-	-	-	-	-	-	-	-	-
	-		Middle	-	-	-	-	-	-	-	-	-	-	-	-	-	-	-	-
	-		Bottom	-	-	-	-	-	-	-	-	-	-	-	-	-	-	-	-
20/3/2015	-	Fine	Surface	-	-	-	-	-	-	-	-	-	-	-	-	-	-	-	-
	-		Middle	-	-	-	-	-	-	-	-	-	-	-	-	-	-	-	-
	-		Bottom	-	-	-	-	-	-	-	-	-	-	-	-	-	-	-	-
23/3/2015	-	Fine	Surface	-	-	-	-	-	-	-	-	-	-	-	-	-	-	-	-
	-		Middle	-	-	-	-	-	-	-	-	-	-	-	-	-	-	-	-
	-		Bottom	-	-	-	-	-	-	-	-	-	-	-	-	-	-	-	-
25/3/2015	-	Fine	Surface	-	-	-	-	-	-	-	-	-	-	-	-	-	-	-	-
	-		Middle	-	-	-	-	-	-	-	-	-	-	-	-	-	-	-	-
	-		Bottom	-	-	-	-	-	-	-	-	-	-	-	-	-	-	-	-
27/3/2015	-	Cloudy	Surface	-	-	-	-	-	-	-	-	-	-	-	-	-	-	-	-
	-		Middle	-	-	-	-	-	-	-	-	-	-	-	-	-	-	-	-
	-		Bottom	-	-	-	-	-	-	-	-	-	-	-	-	-	-	-	-

Remarks:
Single underline denotes exceedance over Action Level.
Double underline denotes exceedance over Limit Level.



**Water Monitoring Result at Ex-WPCWA SE - South-eastern corners of ex-Public Cargo Works Area
Mid-Flood Tide**

Date	Time	Weather Condition	Sampling Depth m		Water Temperature °C			pH			Salinity ppt			DO Saturation %			DO mg/L		
					Value		Average	Value		Average	Value		Average	Value		Average	Value		Average
28/2/2015	11:45	Cloudy	Surface	1.0	18.10	18.10	18.1	8.25	8.25	8.3	31.77	31.77	31.8	82.2	81.6	81.9	6.42	6.37	6.40
	-		Middle	-	-	-	-	-	-	-	-	-	-	-	-	-	-	-	-
	11:47		Bottom	4.0	18.00	18.00	18.0	8.25	8.25	8.3	31.98	31.98	32.0	79.9	79.2	79.6	6.24	6.18	6.21
2/3/2015	-	Cloudy	Surface	-	-	-	-	-	-	-	-	-	-	-	-	-	-	-	-
	-		Middle	-	-	-	-	-	-	-	-	-	-	-	-	-	-	-	-
	-		Bottom	-	-	-	-	-	-	-	-	-	-	-	-	-	-	-	-
5/3/2015	-	Cloudy	Surface	-	-	-	-	-	-	-	-	-	-	-	-	-	-	-	-
	-		Middle	-	-	-	-	-	-	-	-	-	-	-	-	-	-	-	-
	-		Bottom	-	-	-	-	-	-	-	-	-	-	-	-	-	-	-	-
7/3/2015	-	Cloudy	Surface	-	-	-	-	-	-	-	-	-	-	-	-	-	-	-	-
	-		Middle	-	-	-	-	-	-	-	-	-	-	-	-	-	-	-	-
	-		Bottom	-	-	-	-	-	-	-	-	-	-	-	-	-	-	-	-
9/3/2015	-	Fine	Surface	-	-	-	-	-	-	-	-	-	-	-	-	-	-	-	-
	-		Middle	-	-	-	-	-	-	-	-	-	-	-	-	-	-	-	-
	-		Bottom	-	-	-	-	-	-	-	-	-	-	-	-	-	-	-	-
11/3/2015	-	Cloudy	Surface	-	-	-	-	-	-	-	-	-	-	-	-	-	-	-	-
	-		Middle	-	-	-	-	-	-	-	-	-	-	-	-	-	-	-	-
	-		Bottom	-	-	-	-	-	-	-	-	-	-	-	-	-	-	-	-
13/3/2015	-	Cloudy	Surface	-	-	-	-	-	-	-	-	-	-	-	-	-	-	-	-
	-		Middle	-	-	-	-	-	-	-	-	-	-	-	-	-	-	-	-
	-		Bottom	-	-	-	-	-	-	-	-	-	-	-	-	-	-	-	-
16/3/2015	-	Cloudy	Surface	-	-	-	-	-	-	-	-	-	-	-	-	-	-	-	-
	-		Middle	-	-	-	-	-	-	-	-	-	-	-	-	-	-	-	-
	-		Bottom	-	-	-	-	-	-	-	-	-	-	-	-	-	-	-	-
18/3/2015	-	Cloudy	Surface	-	-	-	-	-	-	-	-	-	-	-	-	-	-	-	-
	-		Middle	-	-	-	-	-	-	-	-	-	-	-	-	-	-	-	-
	-		Bottom	-	-	-	-	-	-	-	-	-	-	-	-	-	-	-	-
20/3/2015	-	Fine	Surface	-	-	-	-	-	-	-	-	-	-	-	-	-	-	-	-
	-		Middle	-	-	-	-	-	-	-	-	-	-	-	-	-	-	-	-
	-		Bottom	-	-	-	-	-	-	-	-	-	-	-	-	-	-	-	-
23/3/2015	-	Fine	Surface	-	-	-	-	-	-	-	-	-	-	-	-	-	-	-	-
	-		Middle	-	-	-	-	-	-	-	-	-	-	-	-	-	-	-	-
	-		Bottom	-	-	-	-	-	-	-	-	-	-	-	-	-	-	-	-
25/3/2015	-	Fine	Surface	-	-	-	-	-	-	-	-	-	-	-	-	-	-	-	-
	-		Middle	-	-	-	-	-	-	-	-	-	-	-	-	-	-	-	-
	-		Bottom	-	-	-	-	-	-	-	-	-	-	-	-	-	-	-	-
27/3/2015	-	Cloudy	Surface	-	-	-	-	-	-	-	-	-	-	-	-	-	-	-	-
	-		Middle	-	-	-	-	-	-	-	-	-	-	-	-	-	-	-	-
	-		Bottom	-	-	-	-	-	-	-	-	-	-	-	-	-	-	-	-

Remarks:
 Single underline denotes exceedance over Action Level.
 Double underline denotes exceedance over Limit Level.



**Water Monitoring Result at Ex-WPCWA SW - South-western corners of ex-Public Cargo Works Area
Mid-Ebb Tide**

Date	Time	Weather Condition	Sampling Depth		Water Temperature			pH			Salinity			DO Saturation			DO		
					°C			-			ppt			%			mg/L		
			m		Value	Average	Value	Average	Value	Average	Value	Average	Value	Average	Value	Average	Value	Average	
28/2/2015	20:44	Cloudy	Surface	1.0	19.20	19.20	19.2	7.95	7.95	8.0	28.33	28.33	28.3	56.1	56.3	56.2	4.38	4.39	4.39
	-		Middle	-	-	-	-	-	-	-	-	-	-	-	-	-	-	-	-
	20:46		Bottom	4.0	19.20	19.20	19.2	7.93	7.93	7.9	28.34	28.34	28.3	62.3	63.1	62.7	4.86	4.92	4.89
2/3/2015	-	Cloudy	Surface	-	-	-	-	-	-	-	-	-	-	-	-	-	-	-	-
	-		Middle	-	-	-	-	-	-	-	-	-	-	-	-	-	-	-	-
	-		Bottom	-	-	-	-	-	-	-	-	-	-	-	-	-	-	-	-
5/3/2015	-	Cloudy	Surface	-	-	-	-	-	-	-	-	-	-	-	-	-	-	-	-
	-		Middle	-	-	-	-	-	-	-	-	-	-	-	-	-	-	-	-
	-		Bottom	-	-	-	-	-	-	-	-	-	-	-	-	-	-	-	-
7/3/2015	-	Cloudy	Surface	-	-	-	-	-	-	-	-	-	-	-	-	-	-	-	-
	-		Middle	-	-	-	-	-	-	-	-	-	-	-	-	-	-	-	-
	-		Bottom	-	-	-	-	-	-	-	-	-	-	-	-	-	-	-	-
9/3/2015	-	Fine	Surface	-	-	-	-	-	-	-	-	-	-	-	-	-	-	-	-
	-		Middle	-	-	-	-	-	-	-	-	-	-	-	-	-	-	-	-
	-		Bottom	-	-	-	-	-	-	-	-	-	-	-	-	-	-	-	-
11/3/2015	-	Cloudy	Surface	-	-	-	-	-	-	-	-	-	-	-	-	-	-	-	-
	-		Middle	-	-	-	-	-	-	-	-	-	-	-	-	-	-	-	-
	-		Bottom	-	-	-	-	-	-	-	-	-	-	-	-	-	-	-	-
13/3/2015	-	Cloudy	Surface	-	-	-	-	-	-	-	-	-	-	-	-	-	-	-	-
	-		Middle	-	-	-	-	-	-	-	-	-	-	-	-	-	-	-	-
	-		Bottom	-	-	-	-	-	-	-	-	-	-	-	-	-	-	-	-
16/3/2015	-	Cloudy	Surface	-	-	-	-	-	-	-	-	-	-	-	-	-	-	-	-
	-		Middle	-	-	-	-	-	-	-	-	-	-	-	-	-	-	-	-
	-		Bottom	-	-	-	-	-	-	-	-	-	-	-	-	-	-	-	-
18/3/2015	-	Cloudy	Surface	-	-	-	-	-	-	-	-	-	-	-	-	-	-	-	-
	-		Middle	-	-	-	-	-	-	-	-	-	-	-	-	-	-	-	-
	-		Bottom	-	-	-	-	-	-	-	-	-	-	-	-	-	-	-	-
20/3/2015	-	Fine	Surface	-	-	-	-	-	-	-	-	-	-	-	-	-	-	-	-
	-		Middle	-	-	-	-	-	-	-	-	-	-	-	-	-	-	-	-
	-		Bottom	-	-	-	-	-	-	-	-	-	-	-	-	-	-	-	-
23/3/2015	-	Cloudy	Surface	-	-	-	-	-	-	-	-	-	-	-	-	-	-	-	-
	-		Middle	-	-	-	-	-	-	-	-	-	-	-	-	-	-	-	-
	-		Bottom	-	-	-	-	-	-	-	-	-	-	-	-	-	-	-	-
25/3/2015	-	Cloudy	Surface	-	-	-	-	-	-	-	-	-	-	-	-	-	-	-	-
	-		Middle	-	-	-	-	-	-	-	-	-	-	-	-	-	-	-	-
	-		Bottom	-	-	-	-	-	-	-	-	-	-	-	-	-	-	-	-
27/3/2015	-	Fine	Surface	-	-	-	-	-	-	-	-	-	-	-	-	-	-	-	-
	-		Middle	-	-	-	-	-	-	-	-	-	-	-	-	-	-	-	-
	-		Bottom	-	-	-	-	-	-	-	-	-	-	-	-	-	-	-	-

Remarks:
Single underline denotes exceedance over Action Level.
Double underline denotes exceedance over Limit Level.



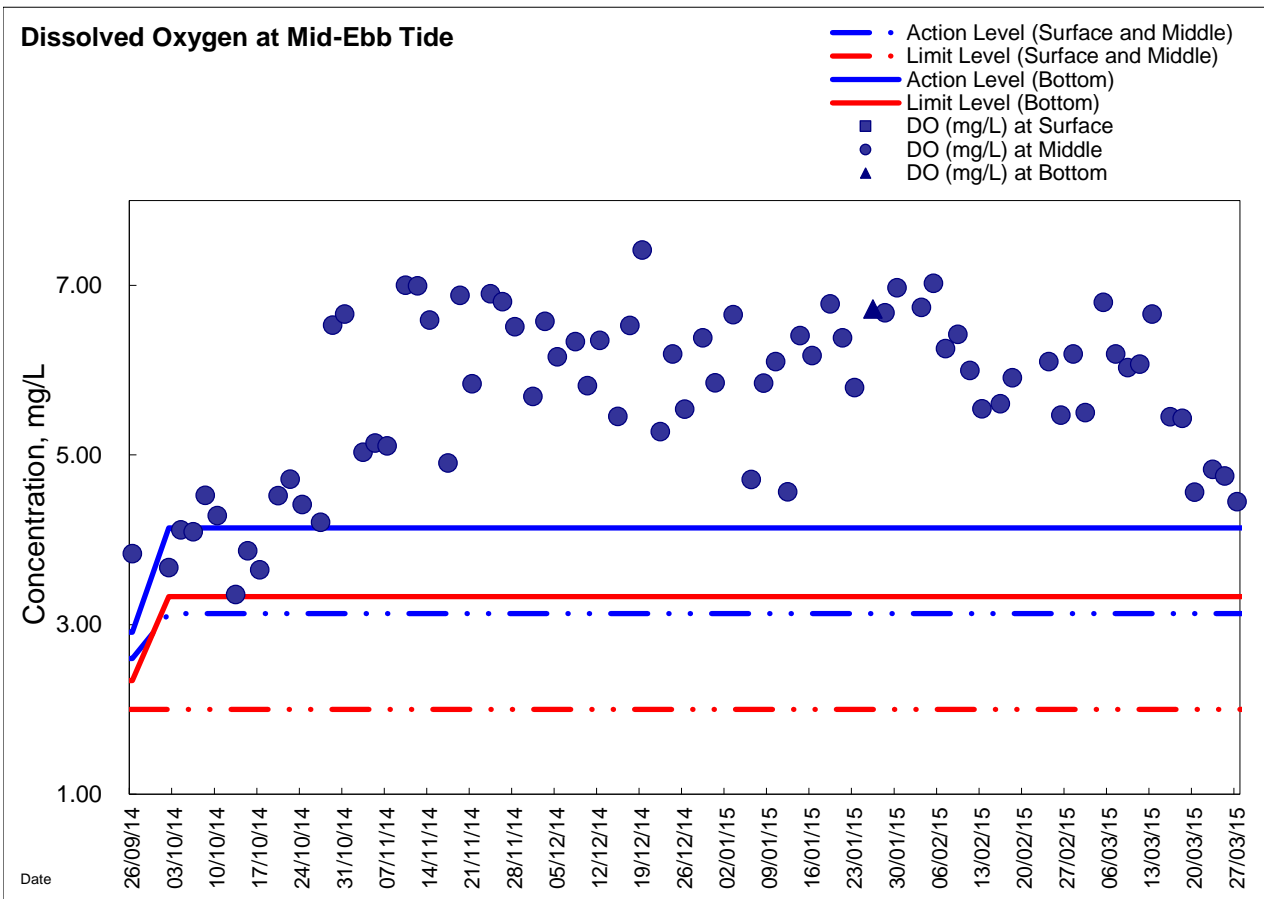
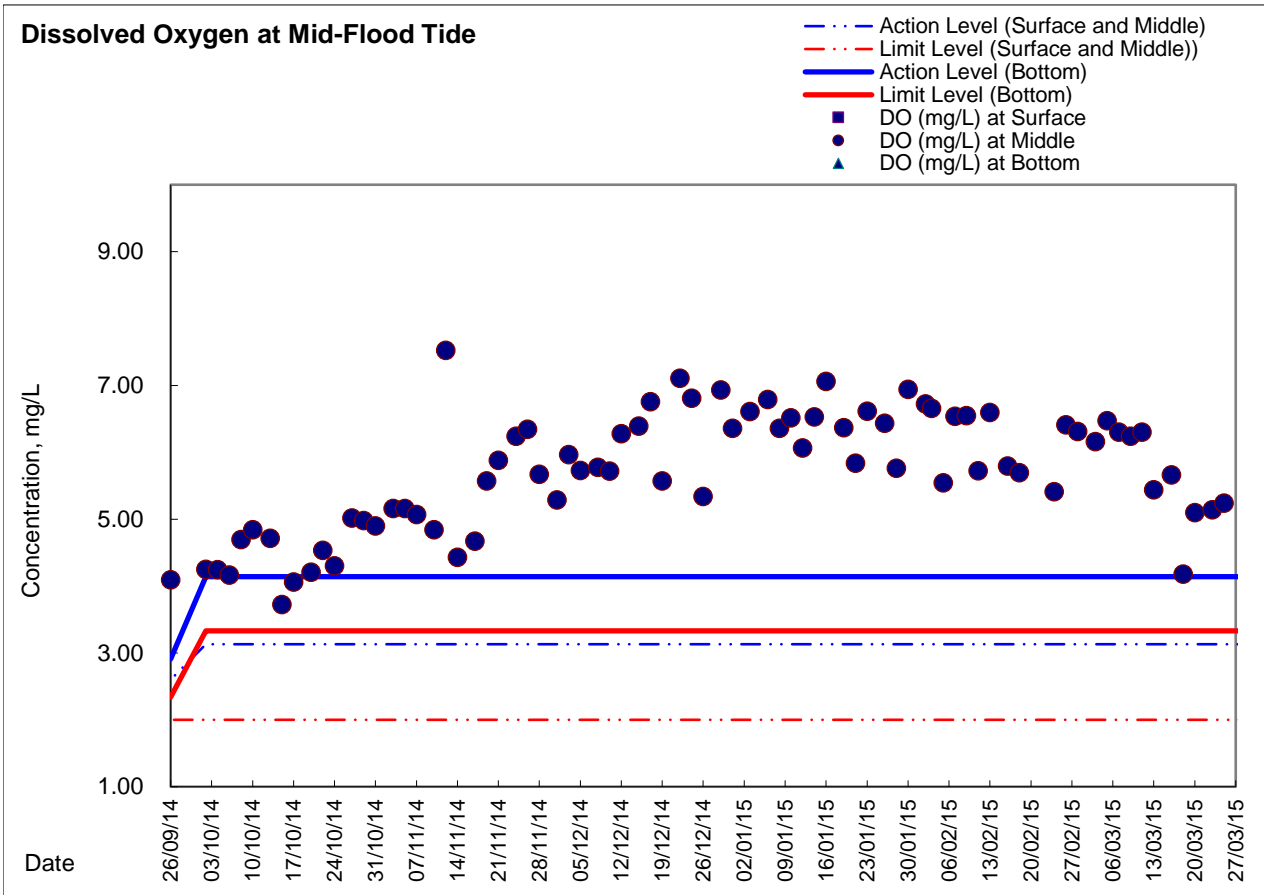
**Water Monitoring Result at Ex-WPCWA SE - South-eastern corners of ex-Public Cargo Works Area
Mid-Ebb Tide**

Date	Time	Weather Condition	Sampling Depth		Water Temperature			pH			Salinity			DO Saturation			DO		
					°C			-			ppt			%			mg/L		
			m		Value	Average	Value	Average	Value	Average	Value	Average	Value	Average	Value	Average			
28/2/2015	20:48	Cloudy	Surface	1.0	19.20	19.20	19.2	7.90	7.90	7.9	28.16	28.16	28.2	56.1	56.8	56.5	4.38	4.44	4.41
	-		Middle	-	-	-	-	-	-	-	-	-	-	-	-	-	-	-	-
	20:50		Bottom	4.0	19.20	19.20	19.2	7.89	7.89	7.9	28.14	28.14	28.1	70.1	69.8	70.0	5.43	5.41	5.42
2/3/2015	-	Cloudy	Surface	-	-	-	-	-	-	-	-	-	-	-	-	-	-	-	-
	-		Middle	-	-	-	-	-	-	-	-	-	-	-	-	-	-	-	-
	-		Bottom	-	-	-	-	-	-	-	-	-	-	-	-	-	-	-	-
5/3/2015	-	Cloudy	Surface	-	-	-	-	-	-	-	-	-	-	-	-	-	-	-	-
	-		Middle	-	-	-	-	-	-	-	-	-	-	-	-	-	-	-	-
	-		Bottom	-	-	-	-	-	-	-	-	-	-	-	-	-	-	-	-
7/3/2015	-	Cloudy	Surface	-	-	-	-	-	-	-	-	-	-	-	-	-	-	-	-
	-		Middle	-	-	-	-	-	-	-	-	-	-	-	-	-	-	-	-
	-		Bottom	-	-	-	-	-	-	-	-	-	-	-	-	-	-	-	-
9/3/2015	-	Fine	Surface	-	-	-	-	-	-	-	-	-	-	-	-	-	-	-	-
	-		Middle	-	-	-	-	-	-	-	-	-	-	-	-	-	-	-	-
	-		Bottom	-	-	-	-	-	-	-	-	-	-	-	-	-	-	-	-
11/3/2015	-	Cloudy	Surface	-	-	-	-	-	-	-	-	-	-	-	-	-	-	-	-
	-		Middle	-	-	-	-	-	-	-	-	-	-	-	-	-	-	-	-
	-		Bottom	-	-	-	-	-	-	-	-	-	-	-	-	-	-	-	-
13/3/2015	-	Cloudy	Surface	-	-	-	-	-	-	-	-	-	-	-	-	-	-	-	-
	-		Middle	-	-	-	-	-	-	-	-	-	-	-	-	-	-	-	-
	-		Bottom	-	-	-	-	-	-	-	-	-	-	-	-	-	-	-	-
16/3/2015	-	Cloudy	Surface	-	-	-	-	-	-	-	-	-	-	-	-	-	-	-	-
	-		Middle	-	-	-	-	-	-	-	-	-	-	-	-	-	-	-	-
	-		Bottom	-	-	-	-	-	-	-	-	-	-	-	-	-	-	-	-
18/3/2015	-	Cloudy	Surface	-	-	-	-	-	-	-	-	-	-	-	-	-	-	-	-
	-		Middle	-	-	-	-	-	-	-	-	-	-	-	-	-	-	-	-
	-		Bottom	-	-	-	-	-	-	-	-	-	-	-	-	-	-	-	-
20/3/2015	-	Fine	Surface	-	-	-	-	-	-	-	-	-	-	-	-	-	-	-	-
	-		Middle	-	-	-	-	-	-	-	-	-	-	-	-	-	-	-	-
	-		Bottom	-	-	-	-	-	-	-	-	-	-	-	-	-	-	-	-
23/3/2015	-	Cloudy	Surface	-	-	-	-	-	-	-	-	-	-	-	-	-	-	-	-
	-		Middle	-	-	-	-	-	-	-	-	-	-	-	-	-	-	-	-
	-		Bottom	-	-	-	-	-	-	-	-	-	-	-	-	-	-	-	-
25/3/2015	-	Cloudy	Surface	-	-	-	-	-	-	-	-	-	-	-	-	-	-	-	-
	-		Middle	-	-	-	-	-	-	-	-	-	-	-	-	-	-	-	-
	-		Bottom	-	-	-	-	-	-	-	-	-	-	-	-	-	-	-	-
27/3/2015	-	Fine	Surface	-	-	-	-	-	-	-	-	-	-	-	-	-	-	-	-
	-		Middle	-	-	-	-	-	-	-	-	-	-	-	-	-	-	-	-
	-		Bottom	-	-	-	-	-	-	-	-	-	-	-	-	-	-	-	-

Remarks:
Single underline denotes exceedance over Action Level.
Double underline denotes exceedance over Limit Level.

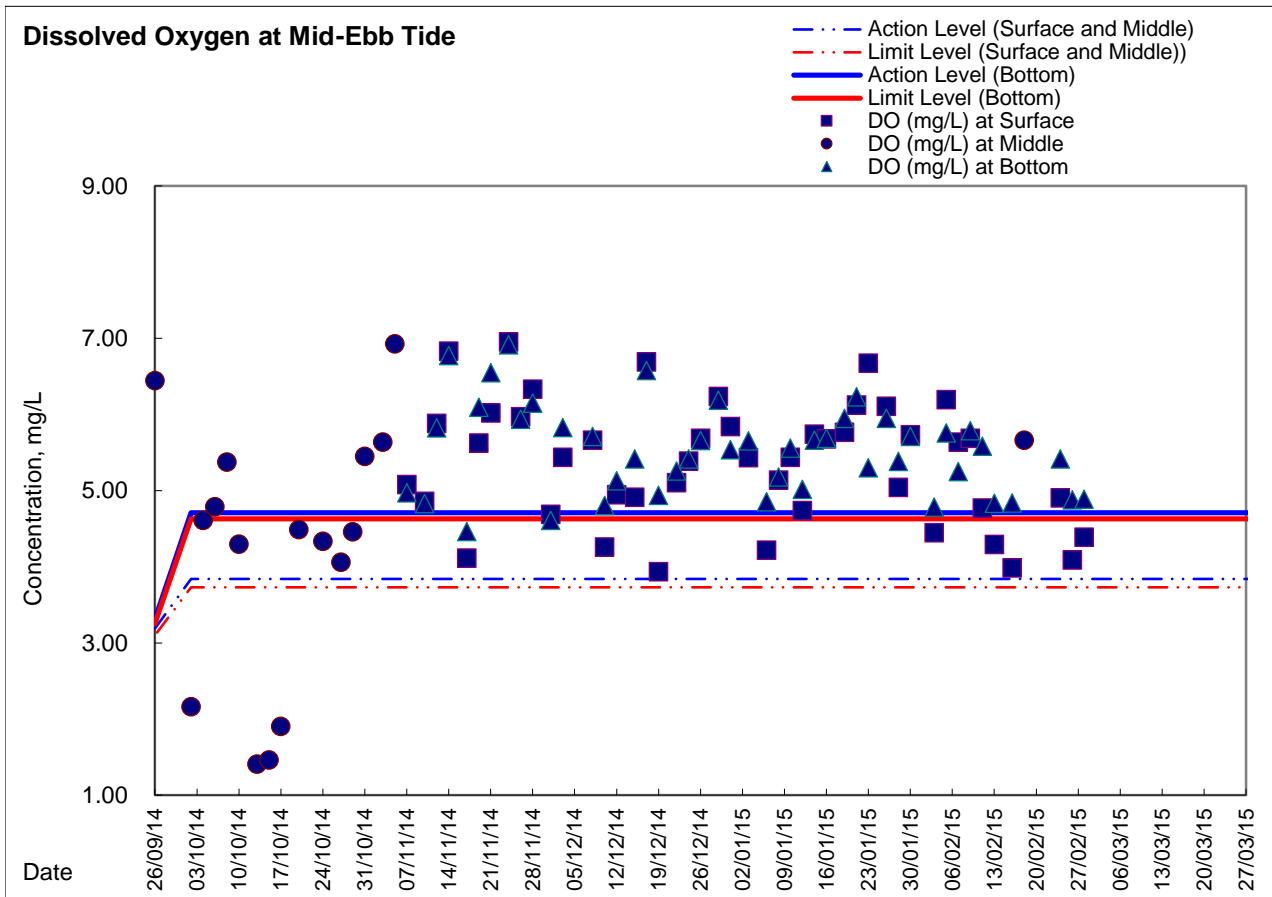
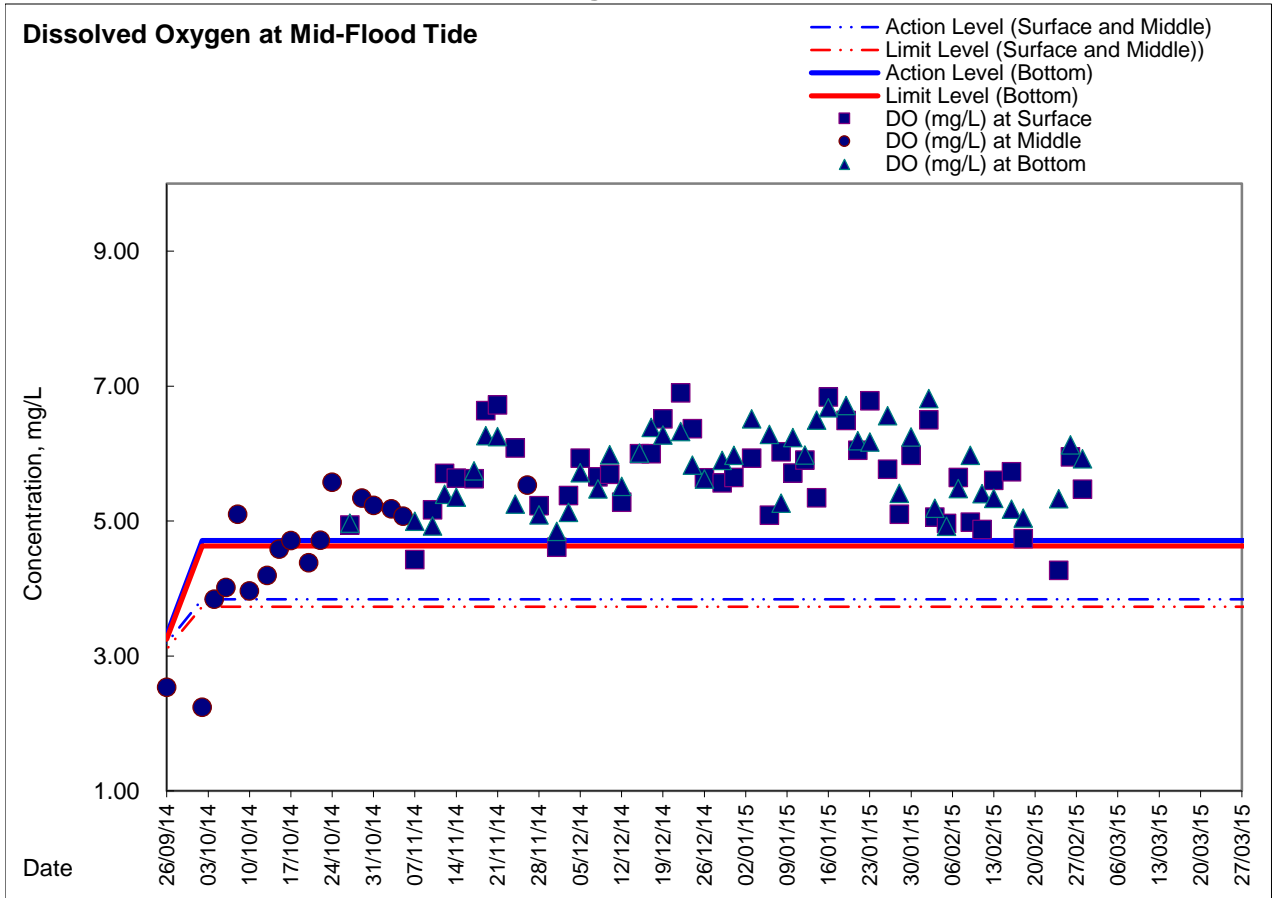


Graphic Presentation of Enhanced Water Monitoring Results (DO) at C6 - Excelsior Hotel





Graphic Presentation of Enhanced Water Monitoring Results (DO) at Ex-WPCWA SW - South-western corners of ex-Public Cargo Works Area





Graphic Presentation of Enhanced Water Monitoring Results (DO) at Ex-WPCWA SE - South-eastern corners of ex-Public Cargo Works Area

